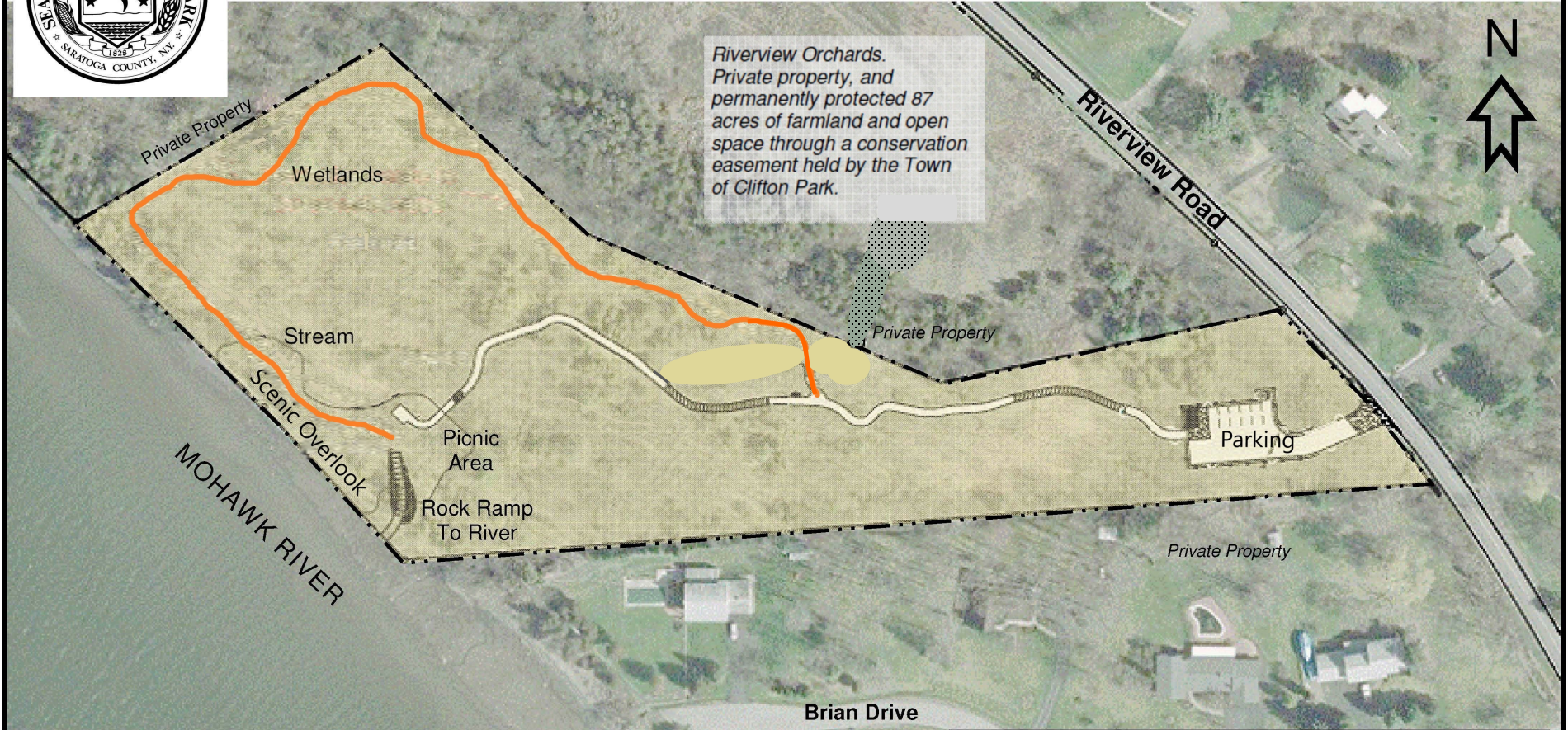




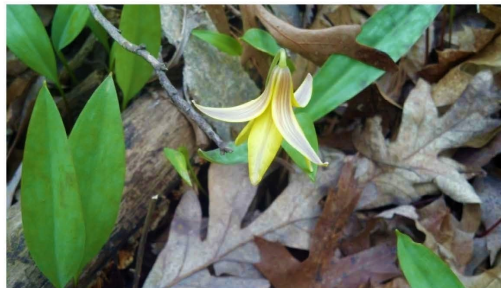
# Mohawk Landing Nature Preserve - Trail Map

Town of Clifton Park






## Mohawk Landing Nature Preserve Trails Map

*This 6-acre public nature preserve offers relaxed walking along a gentle path to arrive at a sweeping view overlooking the Mohawk River from along the cliffs of Clifton Park. The entire trail system is about one-half mile. The parking lot to the picnic area / Scenic Overlook is about 800 feet.*



Trout lily, 5/2/14

## Map Legend

-  Stone dust gravel trail, with boardwalks (about 800 feet/0.15 miles)
-  Seasonal, natural surface path (about 1,400 feet/0.26 miles)
-  Nature preserve boundaries

Contact: Town of Clifton Park, One Town Hall Plaza, Clifton Park, NY 12065 (518) 371-6054, [www.cliftonpark.org](http://www.cliftonpark.org), [planning@cliftonpark.org](mailto:planning@cliftonpark.org)