

Town of Clifton Park Official Zoning Map Saratoga County, NY

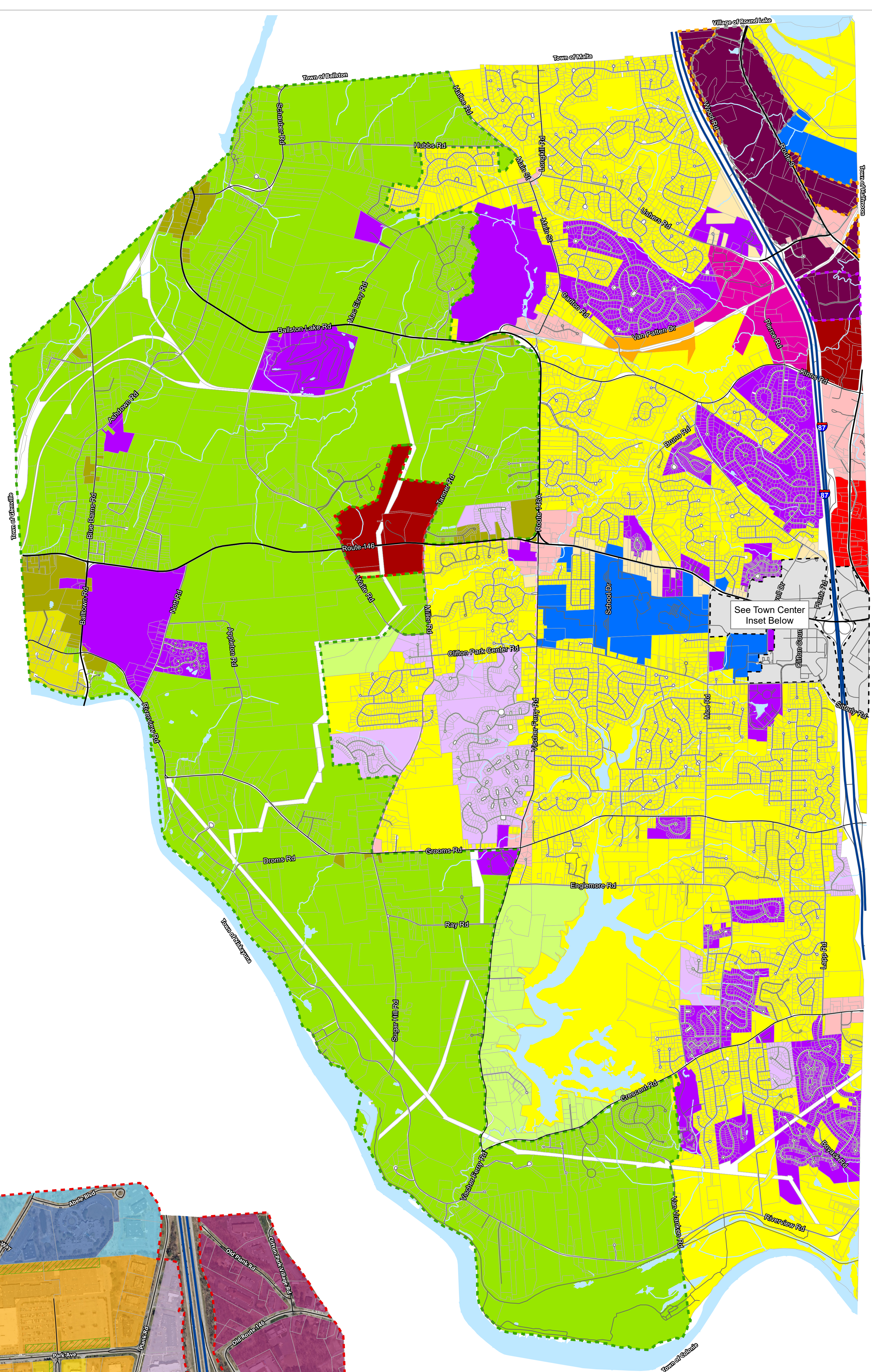
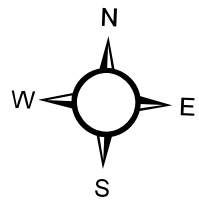
Legend

Zoning Distircts

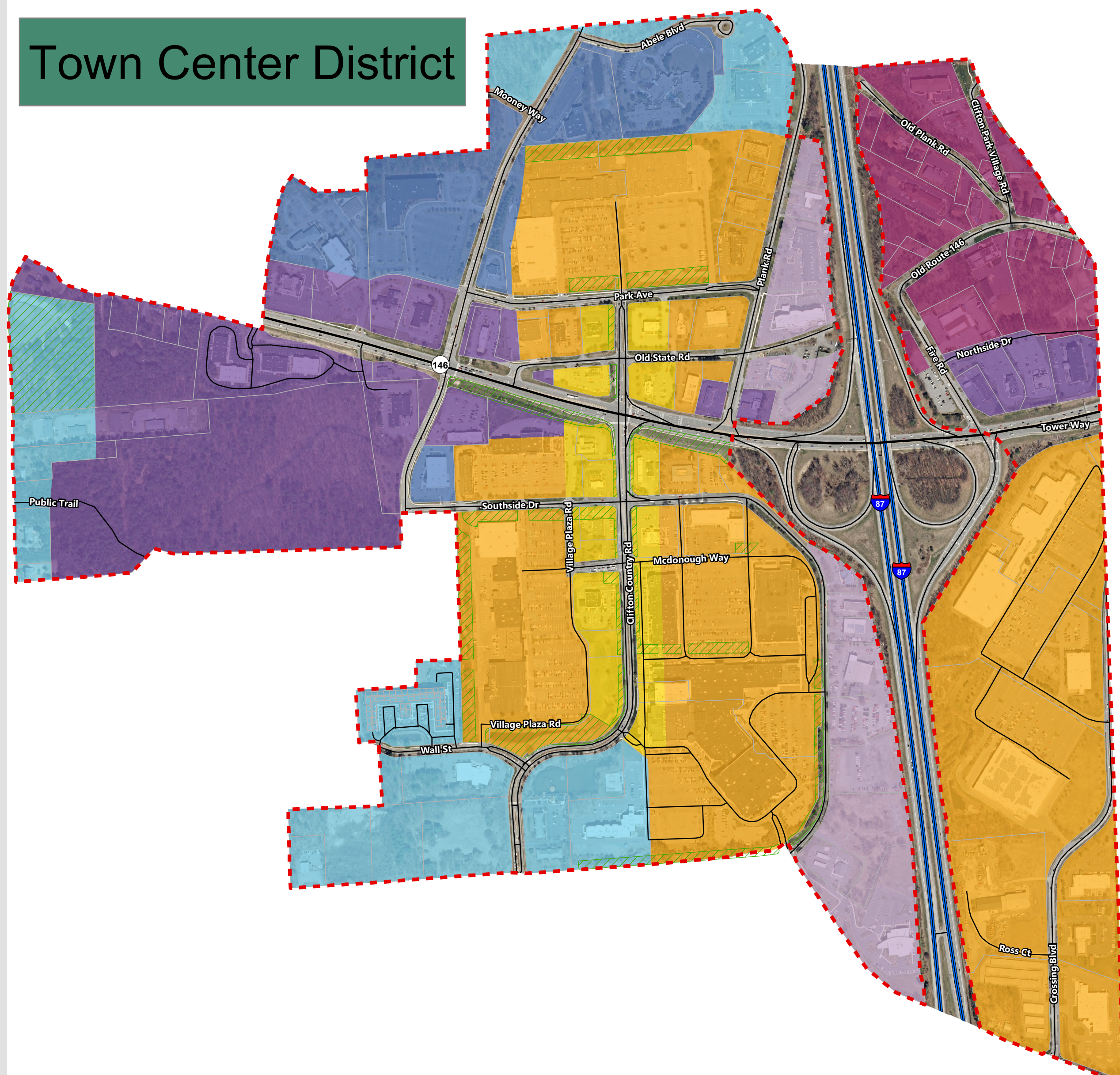
- B-1 Business Non Retail 1
- B-2 Business Non Retail 2
- B-3 Neighborhood Business
- B-4 Highway Business
- B-4A Highway Business/Restricted Retail
- B-5 Corporate Commerce
- CR Conservation Residential
- HM Hamlet Mixed Use
- HR Hamlet Residential
- L-1 Light Industrial 1
- L-2 Light Industrial 2
- PDD Planned Development District
- PIR Public/Institutional/Recreational
- R-1 Residential
- R-3 Agricultural/Residential
- Cluster Subdivisions
- Utilities
- Approximate Parcel Boundary (2021)

Zoning Overlay Districts

- Adult Use Business Overlay
- Corporate Commerce GEIS Study Area
- Mobile Home Park Overlay
- Vischer Ferry Road Corridor Overlay
- Western Clifton Park GEIS Study Area
- Wood Road Corridor GEIS Study Area
- Town Center Boundary

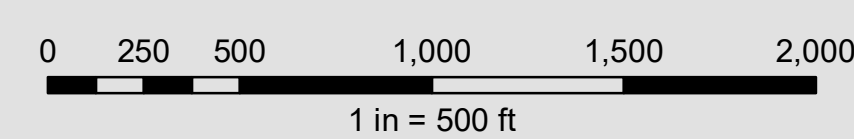
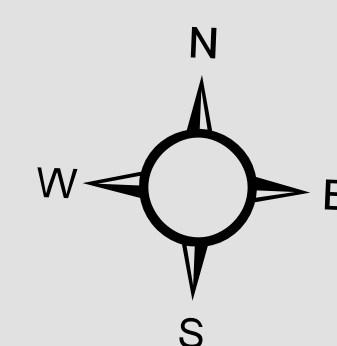


Town Center District



Town Center Zoning Legend

- Town Center Boundary
- Tax Parcel Boundary (2021)
- Local Road
- Interstate
- State Highway
- US Route
- Planned Open Space Area
- TC1 Highway Zone
- TC2 Edge Zone
- TC3 General Zone
- TC4 Transition Zone
- TC5 Neighborhood Zone
- TC6 Boulevard Zone
- TNGB Neighborhood General Business



GPI

Produced For Planning Purposes Only.
Data provided by NYS GIS Clearinghouse &
Other Third Parties.

Issuance Date: 1/10/2022