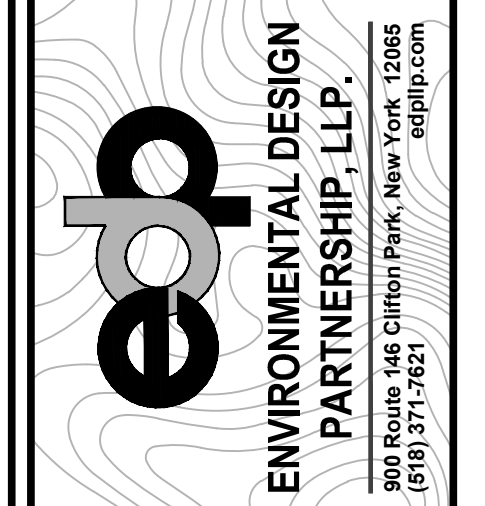
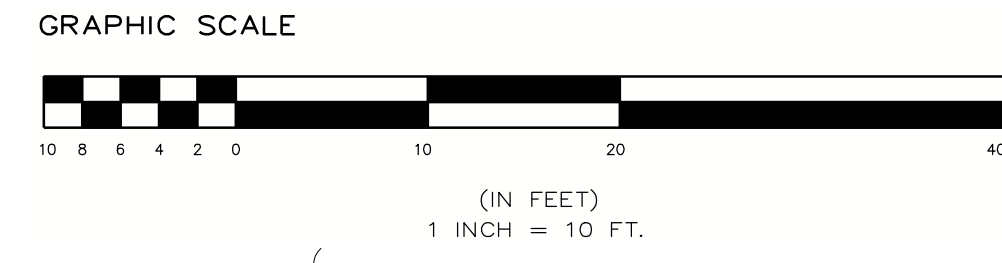


SOIL DATA:

THE FOLLOWING TEST PITS WERE PERFORMED ON JUNE 26, 2020 AND WERE OBSERVED BY ENVIRONMENTAL DESIGN PARTNERSHIP, LLP:

TP#1
 0" - 6" TOP SOIL
 SMALL ROCKS .5"-1"
 6" - 72" FINE SANDY LOAM
 LIGHT BROWN, LOOSE
 NO ROOTS

SEASONAL HIGH GROUNDWATER OBSERVED AT 48"



TAX MAP ID: 265-7-1,
 265.12-4-1
 DATE: AUGUST 12, 2020

**PROPOSED TENNIS COURT REPLACEMENT
 BERNINI DR. PARK
 TOWN OF CLIFTON PARK**

DESIGNED BY	JMC
CHECKED BY	JSD
EDP PROJECT NUMBER	1803
THE ALLOCATION OF THESE DOCUMENTS IN ANY MANNER SHALL BE UNDER THE DIRECT SUPERVISION OF A LICENSED PROFESSIONAL (REGISTERED) ENGINEER FOR AN ARCHITECT, LANDSCAPE ARCHITECT OR A LICENSED ARCHITECT OR SURVEYOR FOR A SURVEYOR. IS A VIOLATION OF THE NEW YORK STATE EDUCATION LAW AND/OR REGULATIONS AND IS A CLASS "C" VIOLATION.	
REVISION	DATE

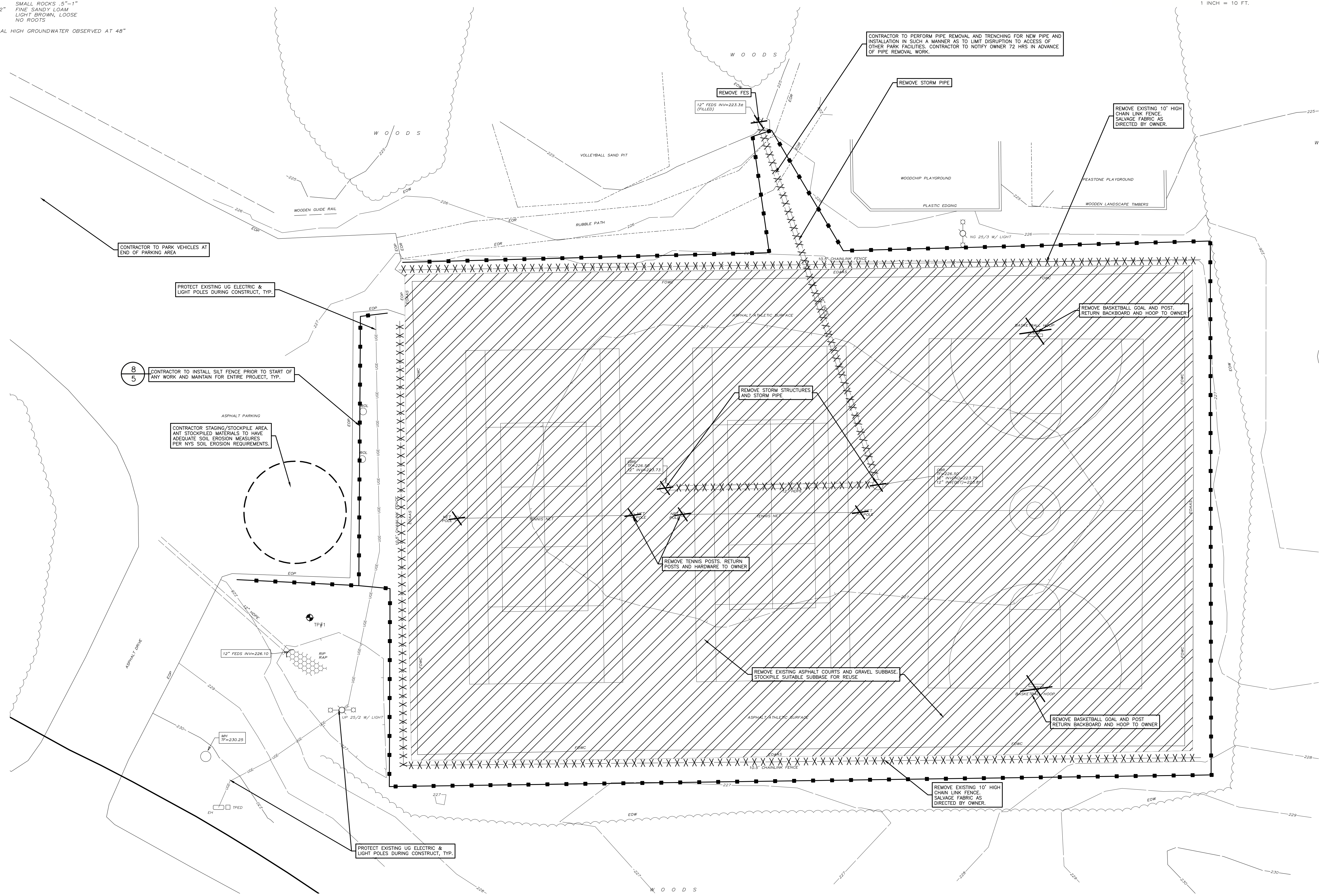
JOSEPH C. DANNIBALE
 R.L.A.
 #02288



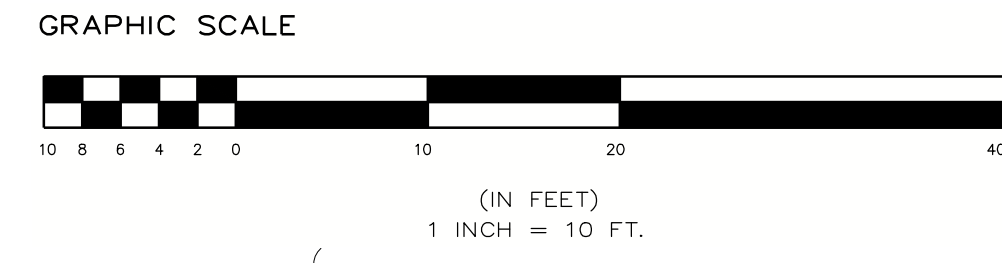
SCALE:
 1" = 10'

SHEET TITLE:
**EXISTING
 CONDITIONS &
 REMOVALS
 PLAN**

SHEET:
2 of 5



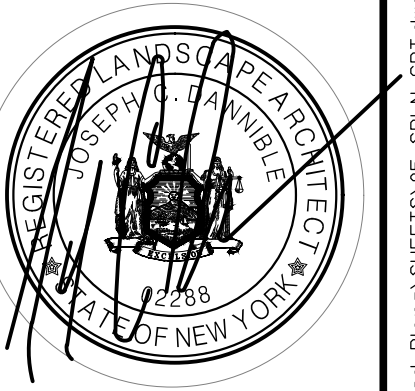
G:\SARATOGA\Clifton Park\Bernini Drive\BERNINI PARK\GIS-dwg\Detailed Plans\SHEETS\BP-EC_CPT.dwg Aug. 10, 2020 03:48:28PM



**PROPOSED TENNIS COURT REPLACEMENT
 BERNINI DR. PARK
 TOWN OF CLIFTON PARK
 BERNINI DR.
 TOWN OF CLIFTON PARK
 SARATOGA COUNTY, NEW YORK**

DRAWN BY	JMC	
CHECK BY	JCD	
EOP PROJECT NUMBER	12403	
<small>THE ALTERATION OF THESE DOCUMENTS IN ANY MANNER WITHOUT THE DIRECT SUPERVISION OF A REGISTERED PROFESSIONAL ENGINEER FOR LANDSCAPE ARCHITECTURE OR A LANDSCAPE ARCHITECT OR SURVEYOR FOR A SURVEYOR IS A VIOLATION OF THE NEW YORK STATE EDUCATION LAW AND/OR REGULATIONS AND IS A CLASS "A" VIOLATION.</small>		
REVISION	DATE	BY

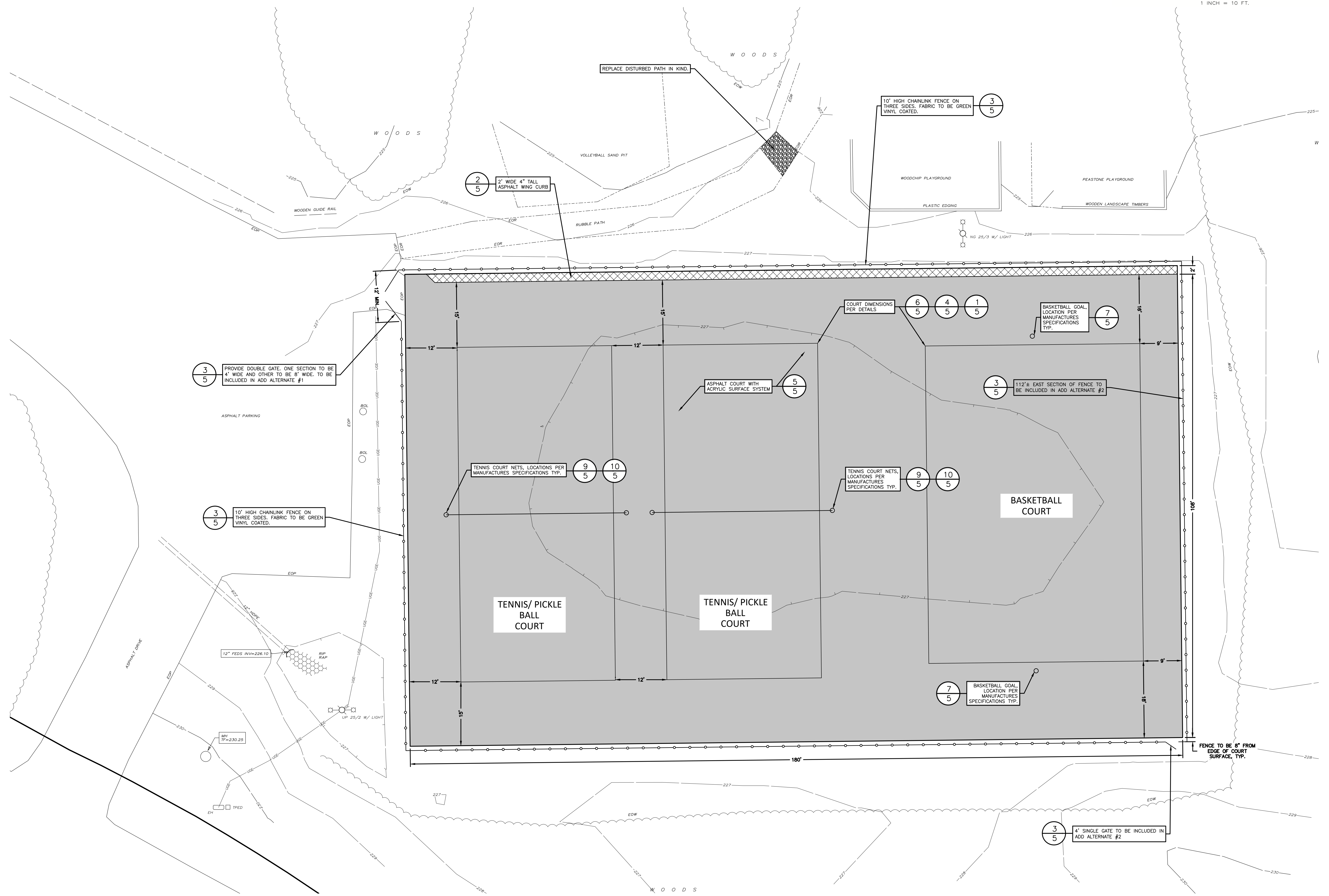
JOSEPH C. DANNIBALE
 R.L.A.
 #02288

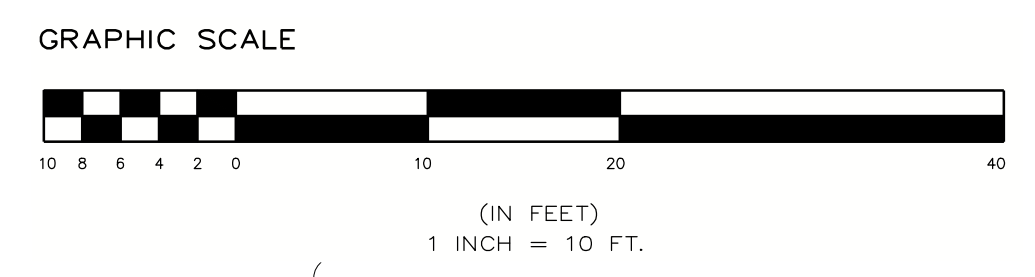
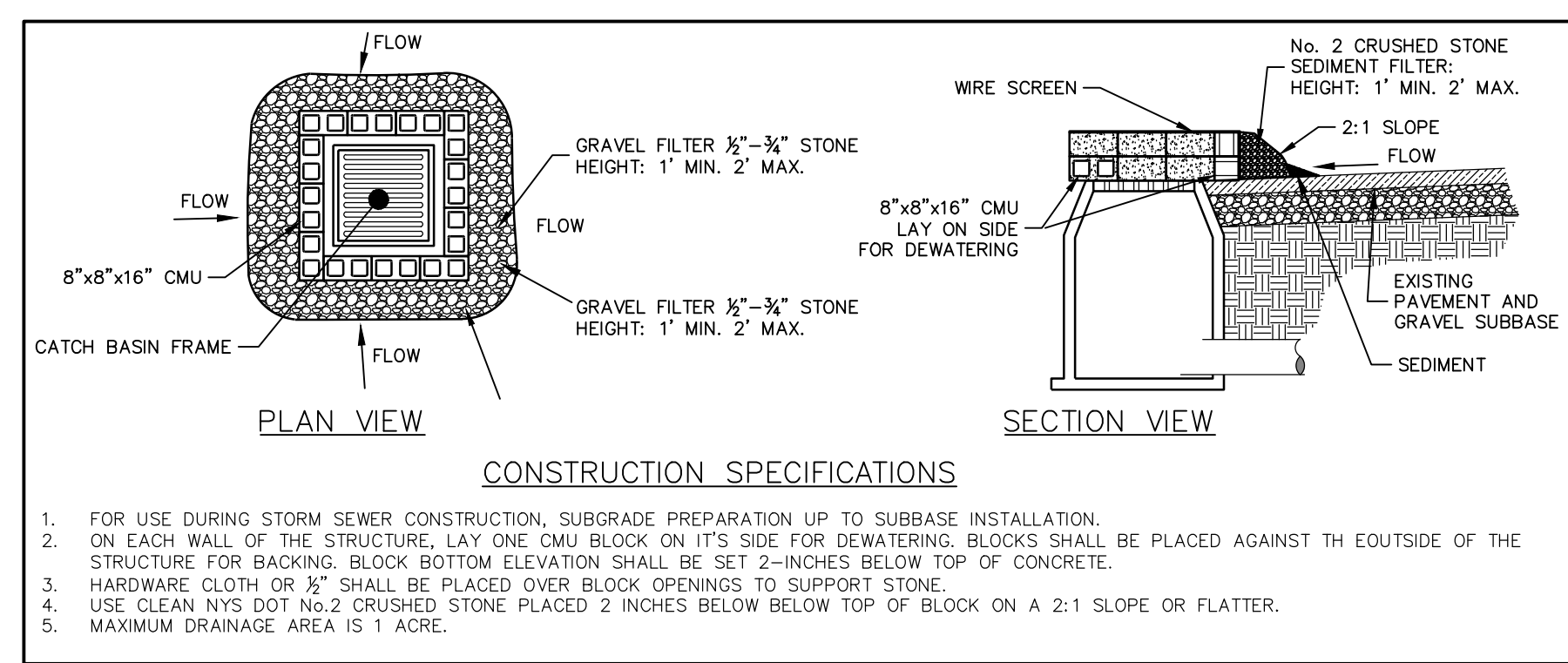


SCALE:
1" = 10'

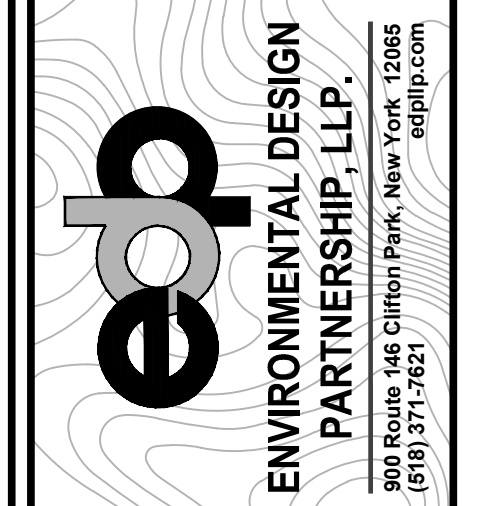
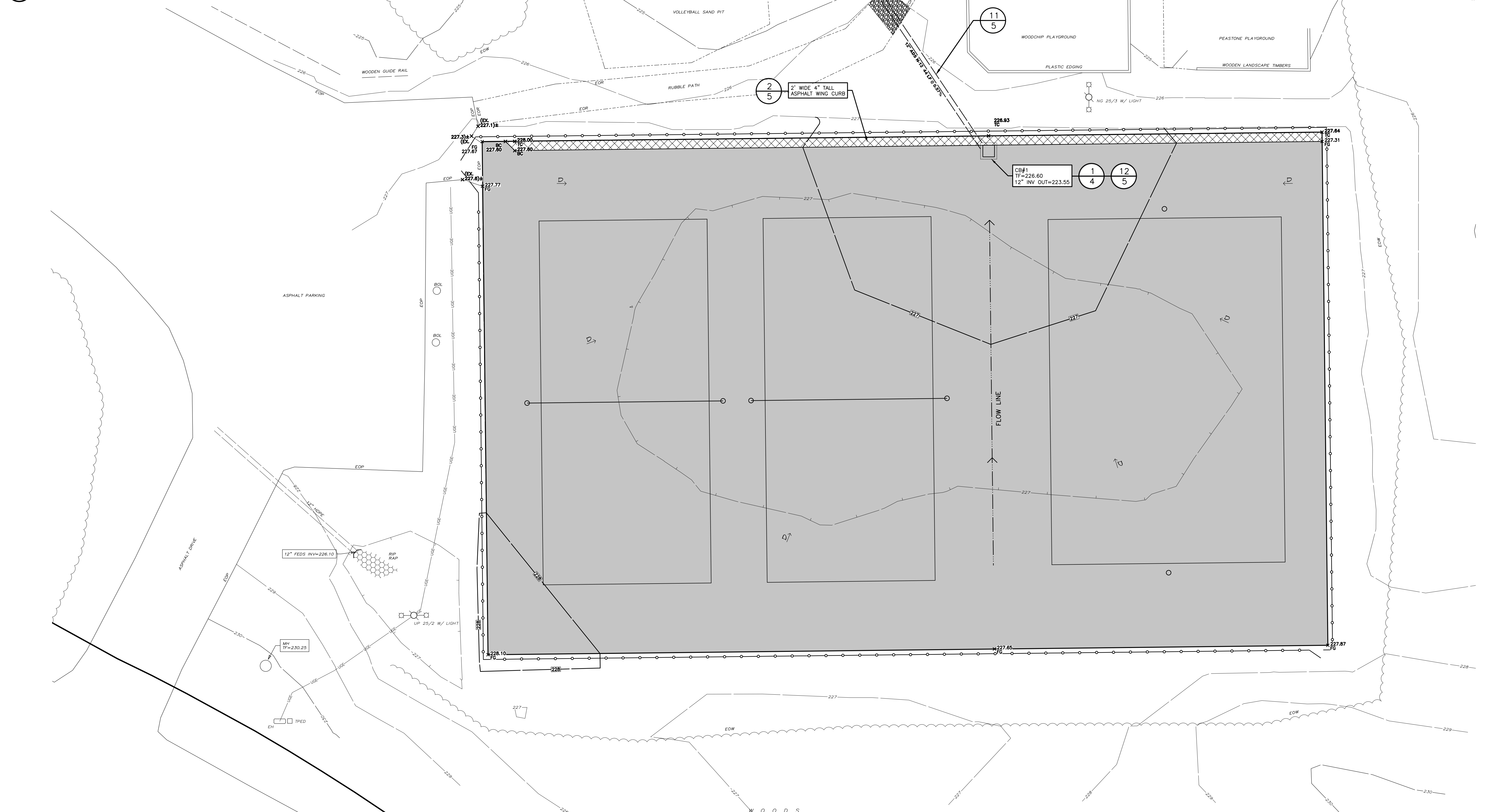
SHEET TITLE:
SITE PLAN

SHEET:
3 of 5





1 INLET PROTECTION
4 NOT TO SCALE



**PROPOSED TENNIS COURT REPLACEMENT
BERNINI DR. PARK
TOWN OF CLIFTON PARK**

BERNINI DR.
TOWN OF CLIFTON PARK
SARATOGA COUNTY, NEW YORK

TAX MAP ID: 265-7-1,
265-12-4-1
DATE: AUGUST 12, 2020

DRAWN BY	JMC
CHECK BY	JCD
EOP PROJECT NUMBER	12403
<small>THE ALTERATION OF THESE DOCUMENTS IN ANY MANNER SHALL BE UNDER THE DIRECT SUPERVISION OF THE ENGINEER. PROFESSIONAL SEALS AND STAMPS OF ARCHITECTS, LANDSCAPE ARCHITECTS, ENGINEERS, AND SURVEYORS FOR A SUPERVISOR IS A VIOLATION OF THE NEW YORK STATE EDUCATION LAW AND/OR REGULATIONS AND IS A CLASS "A" VIOLATION.</small>	
REVISION	DATE BY

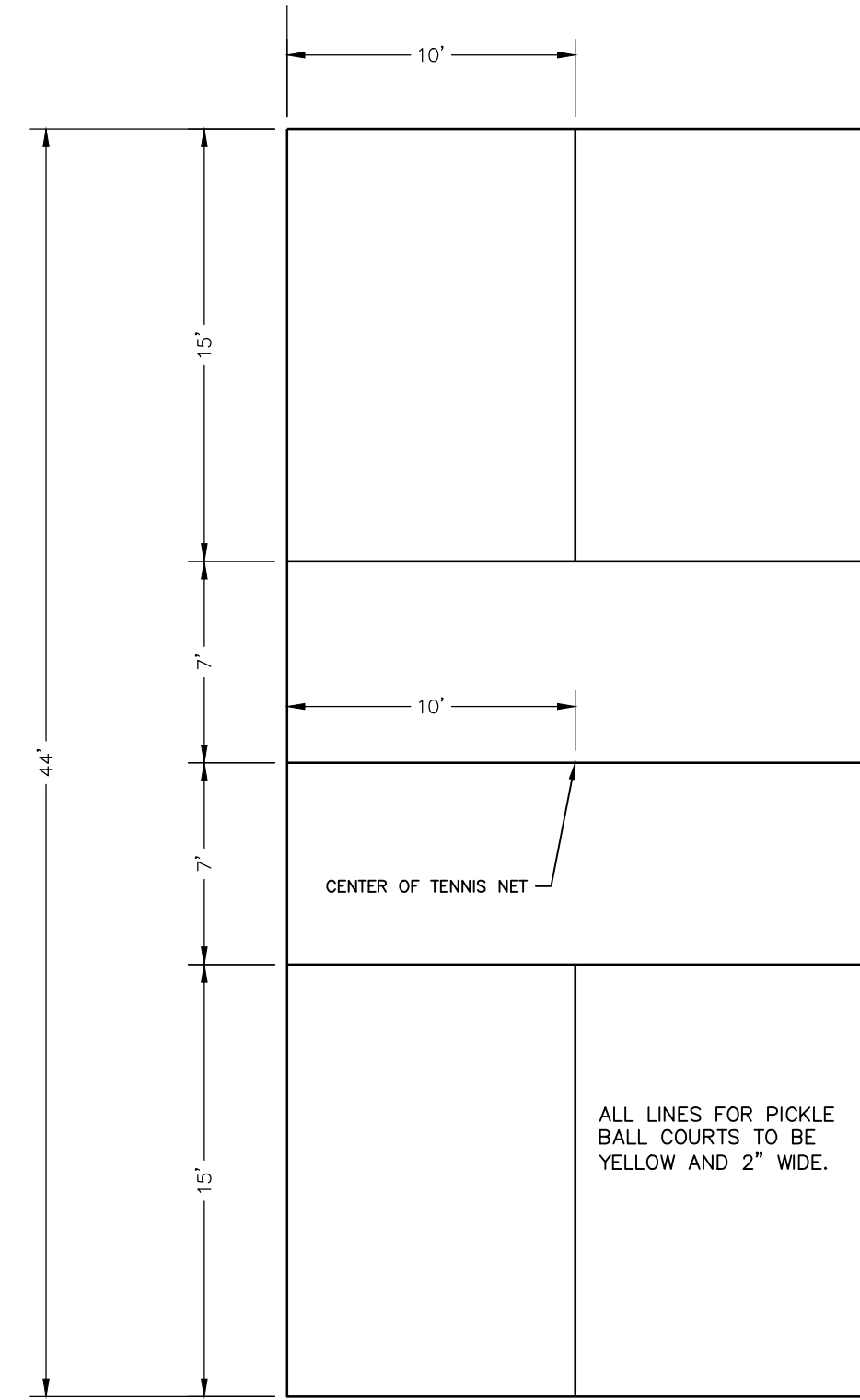
JOSEPH C. DANNIBALE
R.L.A.
#02288



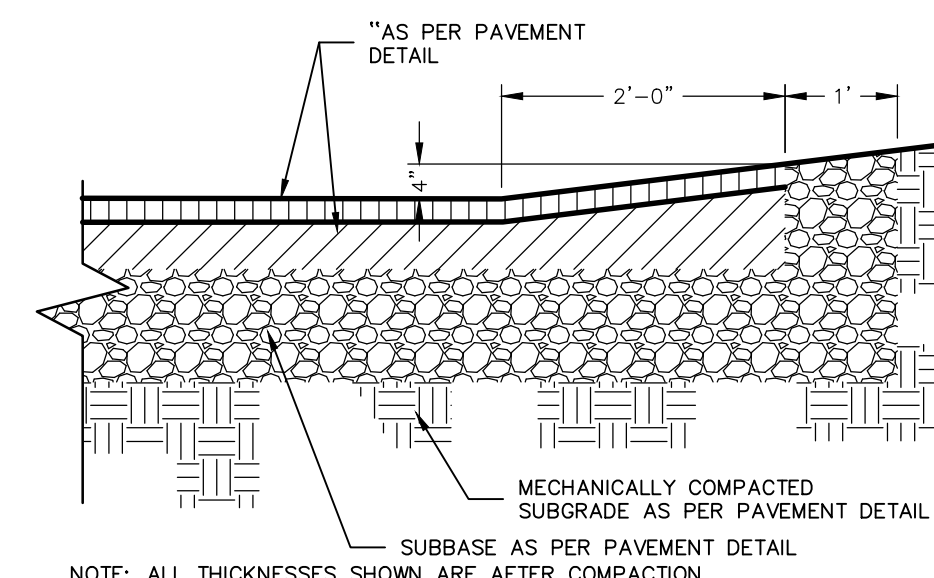
SCALE:
1:10

SHEET TITLE:
GRADING PLAN

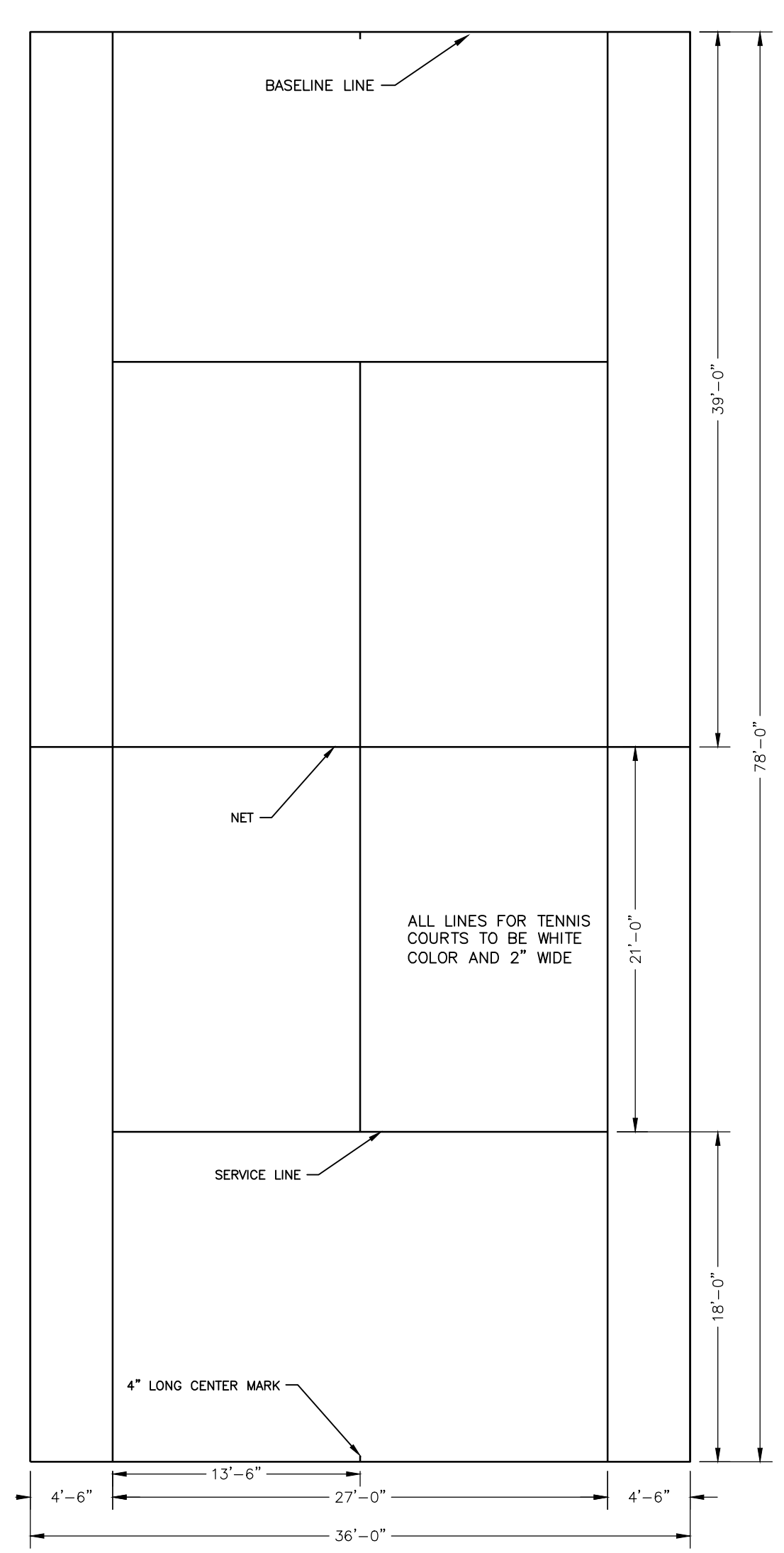
G:\SARATOGA\Clifton Park\Bernini Drive\BERNINI PARK\GIS-dwg\Detailed Plans\SHEETS\US-GPL\CLPT.dwg Aug 10, 2020 03:49:38PM



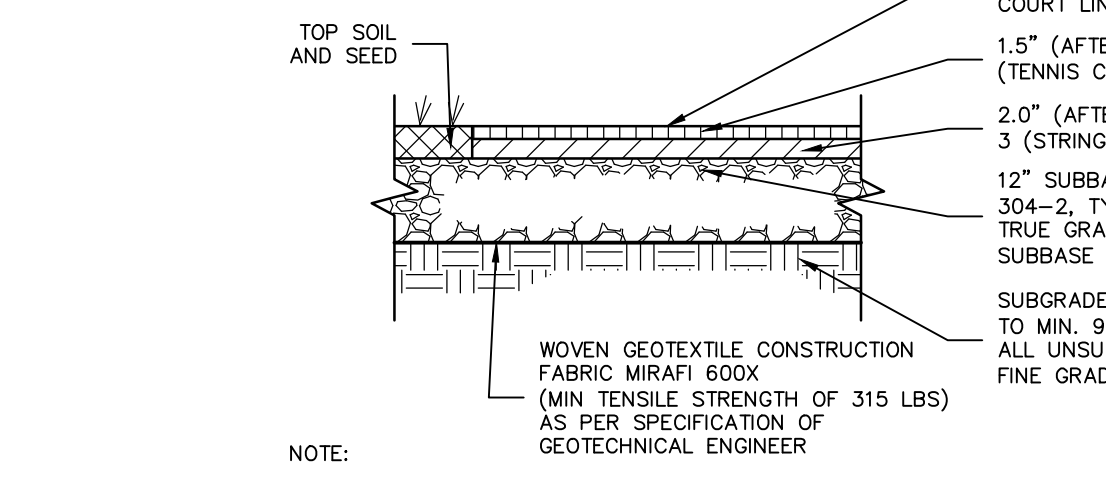
1 PICKLE BALL COURT
5 NOT TO SCALE



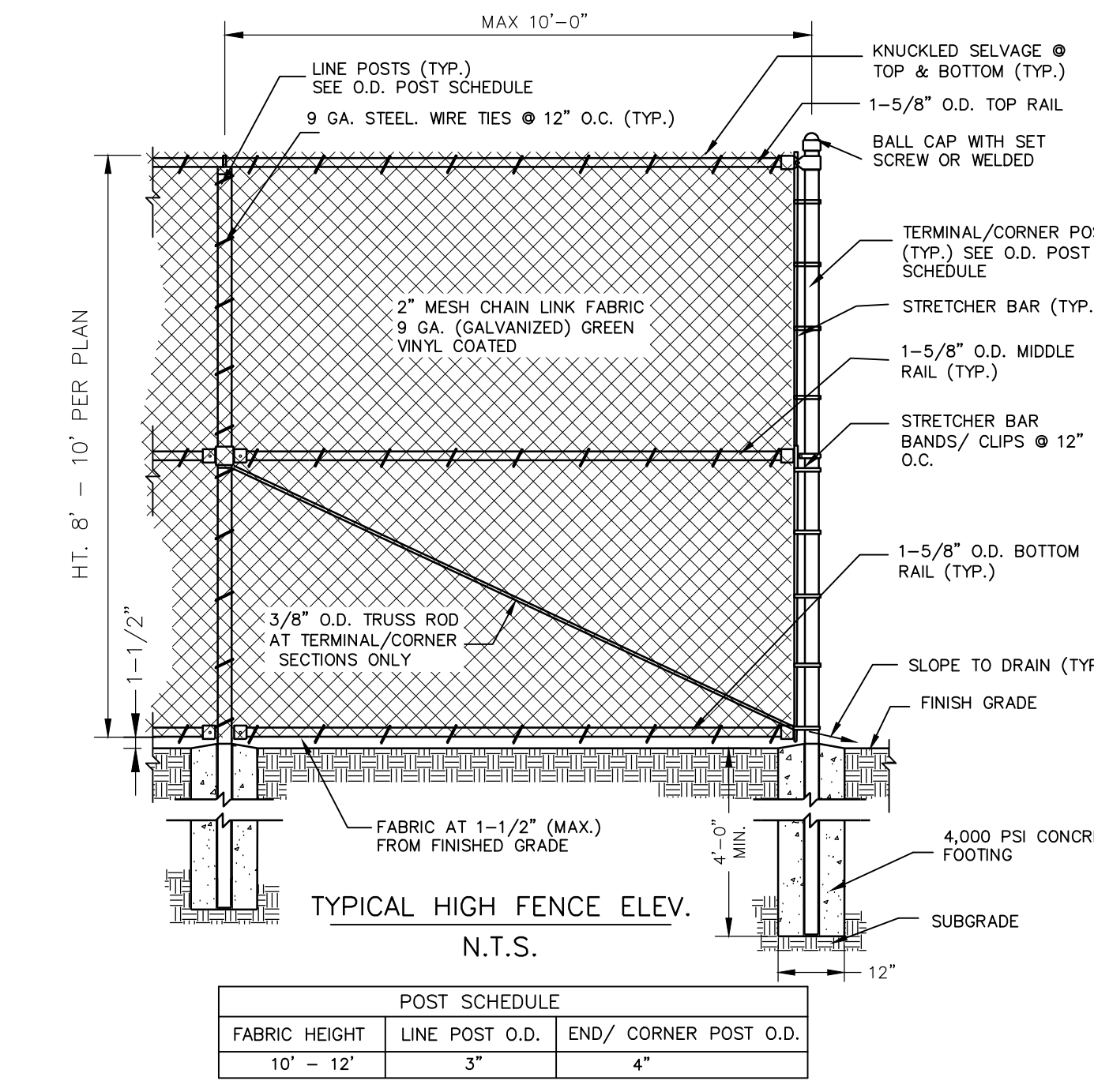
2 WING CURB
5 NOT TO SCALE



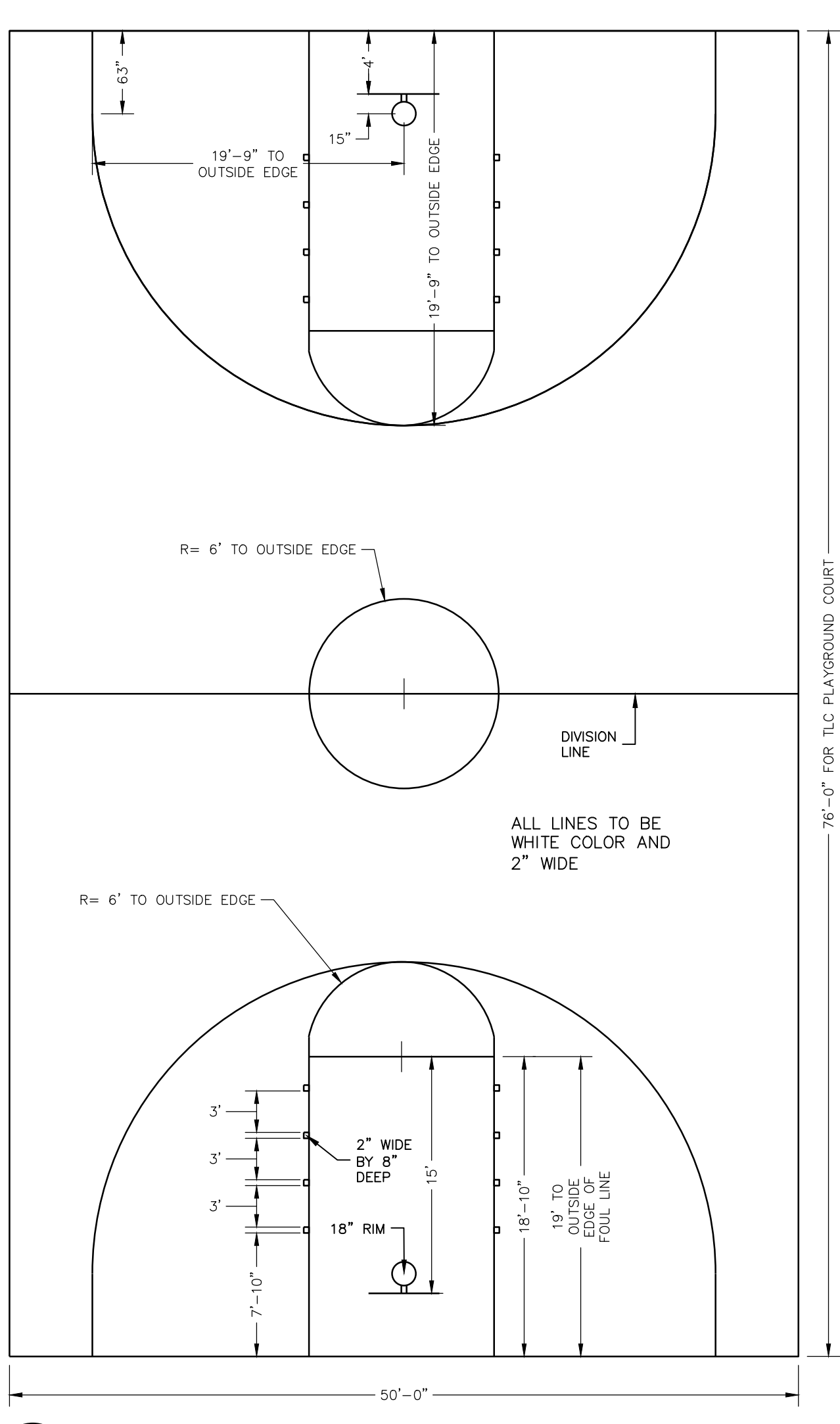
4 TENNIS COURT
5 NOT TO SCALE



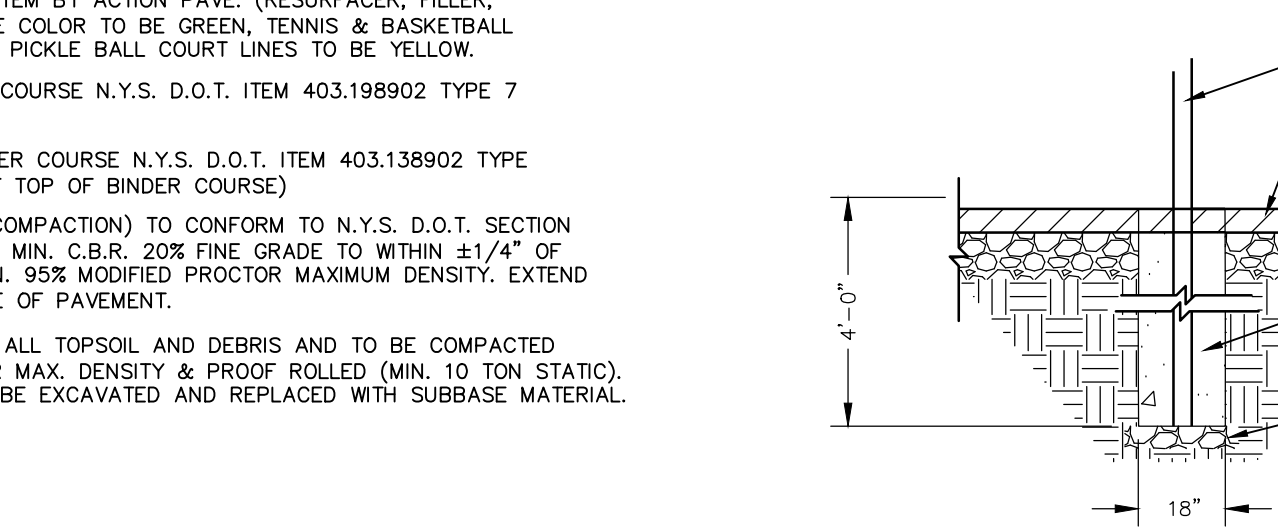
5 TENNIS COURT ASPHALT PAVEMENT
5 NOT TO SCALE



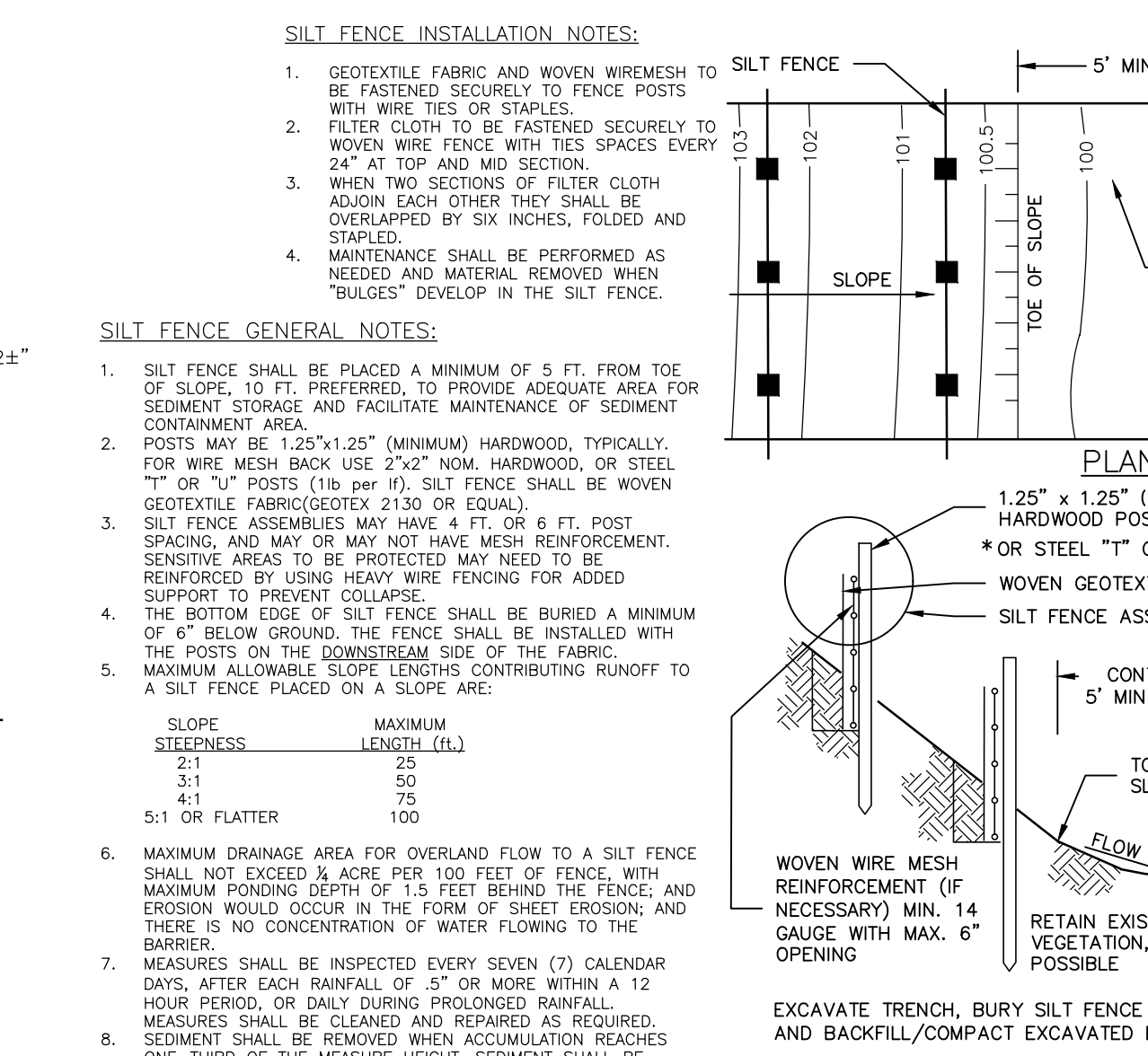
3 CHANILINK FENCE
5 NOT TO SCALE



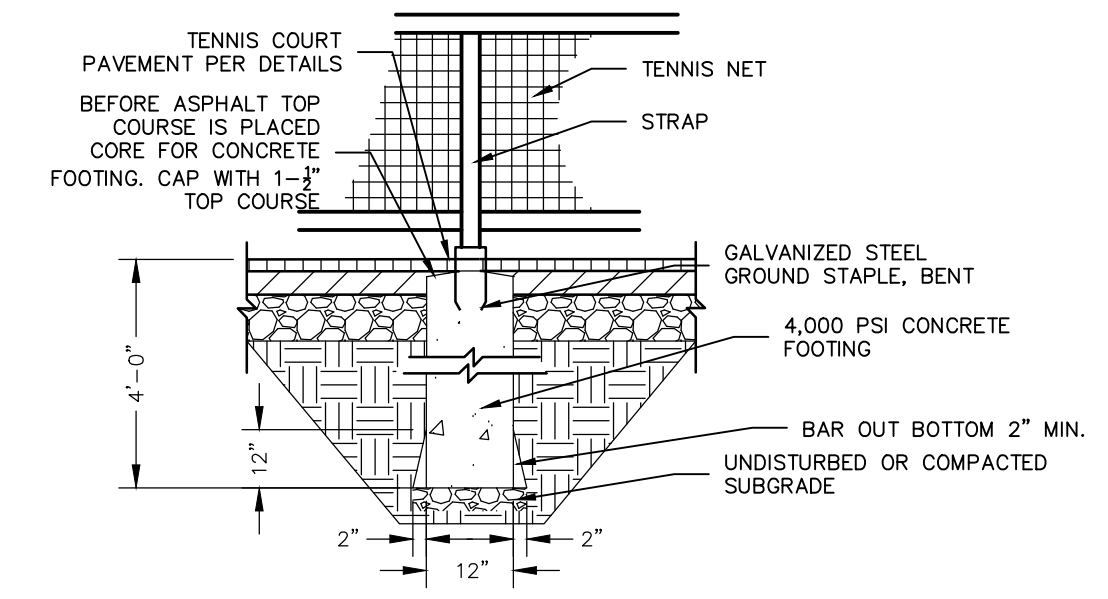
6 BASKETBALL COURT
5 NOT TO SCALE



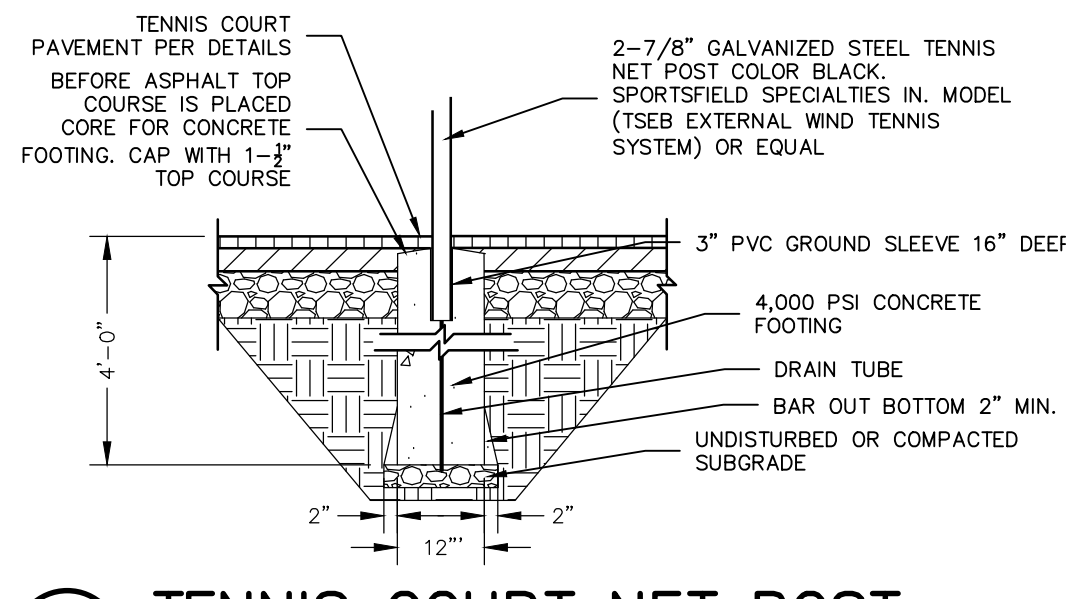
7 BASKETBALL GOAL POST
5 NOT TO SCALE



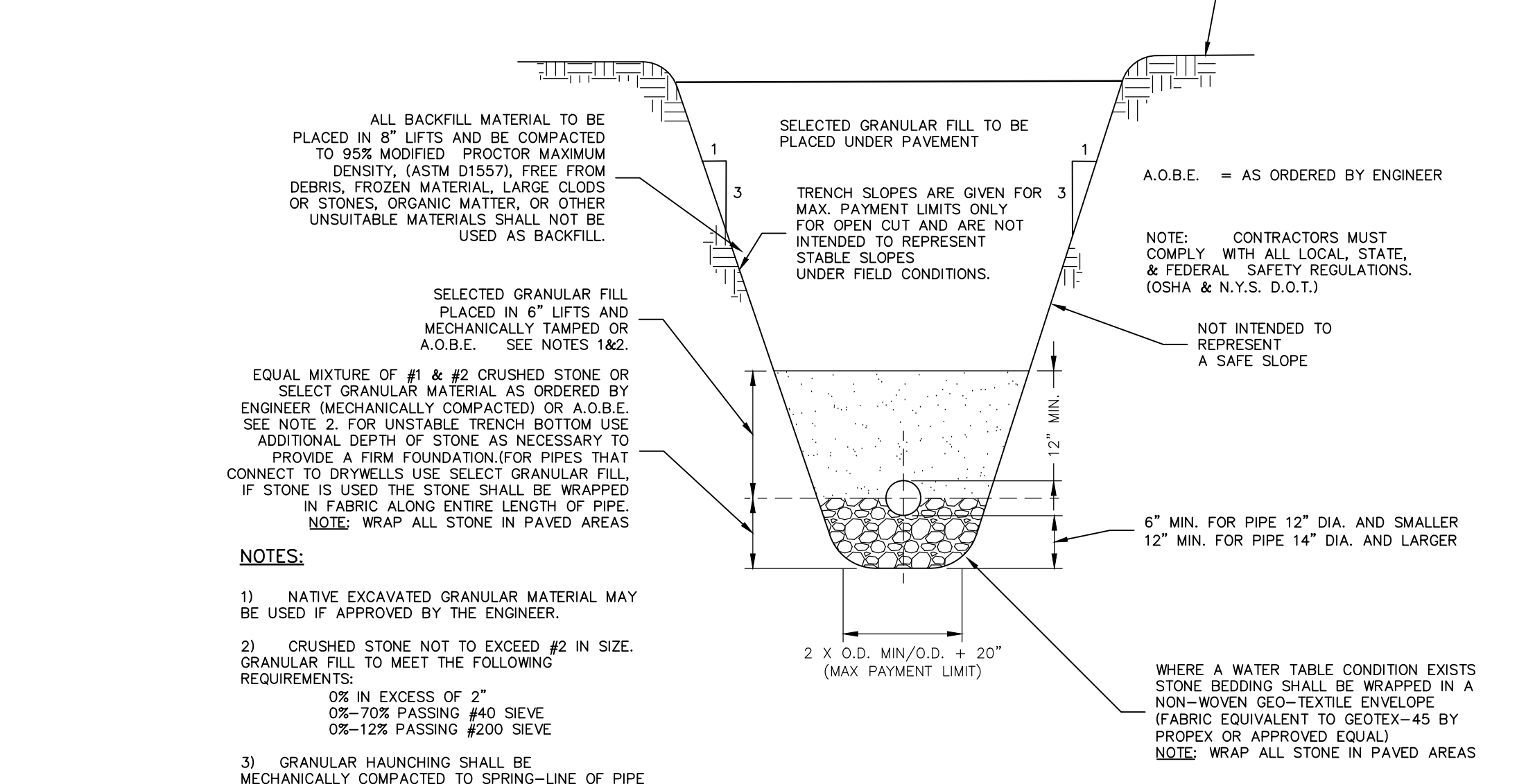
8 SILT FENCE
5 NOT TO SCALE



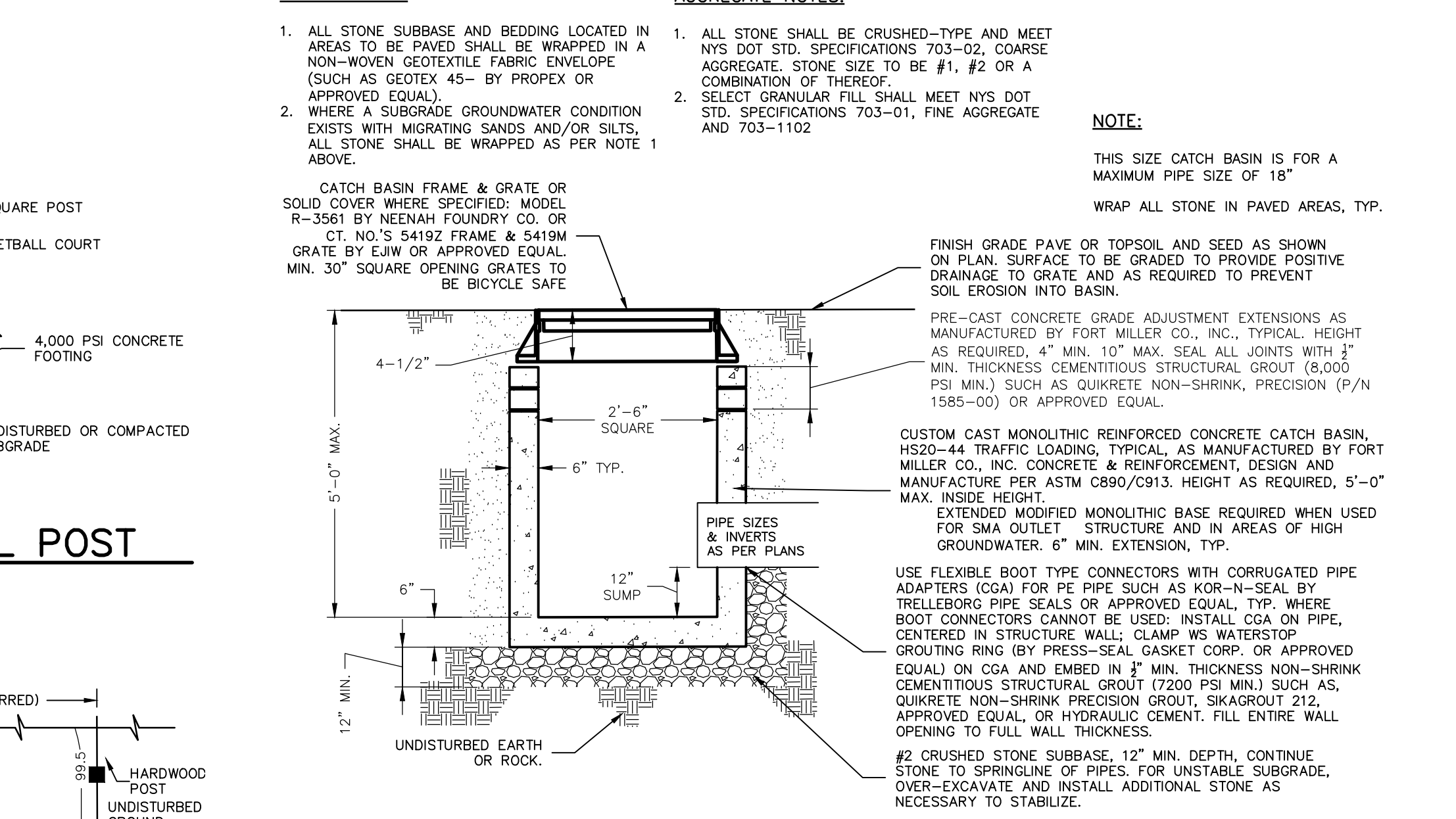
9 TENNIS COURT NET HOLDOWN
5 NOT TO SCALE



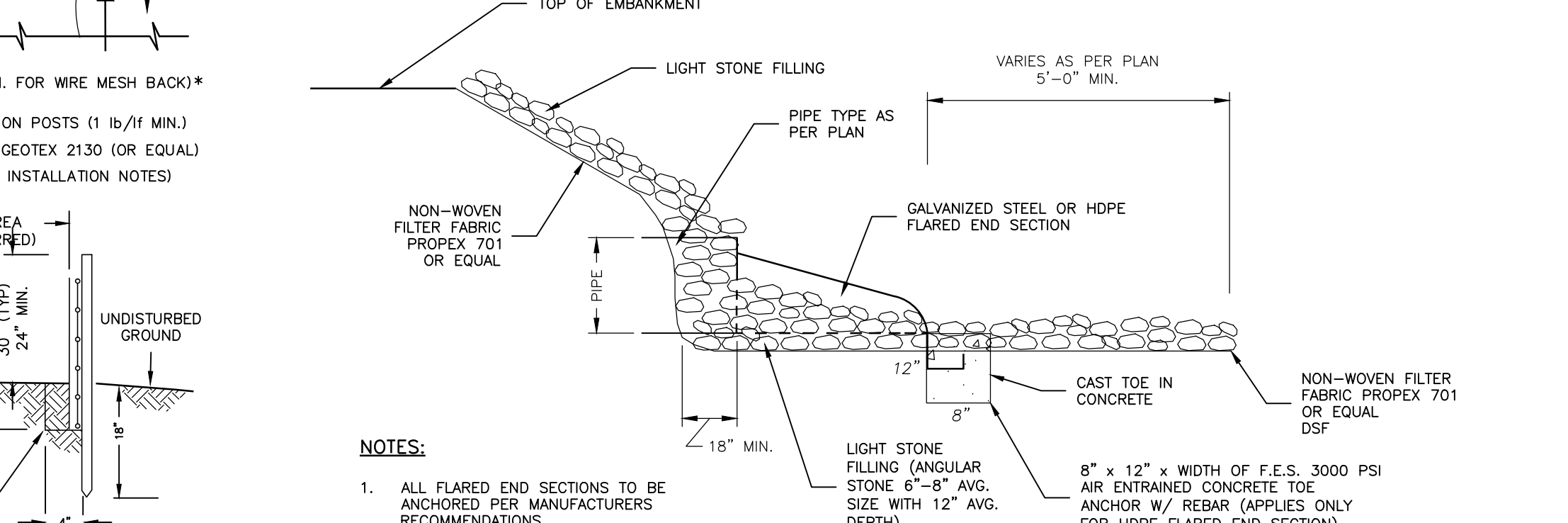
10 TENNIS COURT NET POST
5 NOT TO SCALE



11 STORM PIPE TRENCH
5 NOT TO SCALE



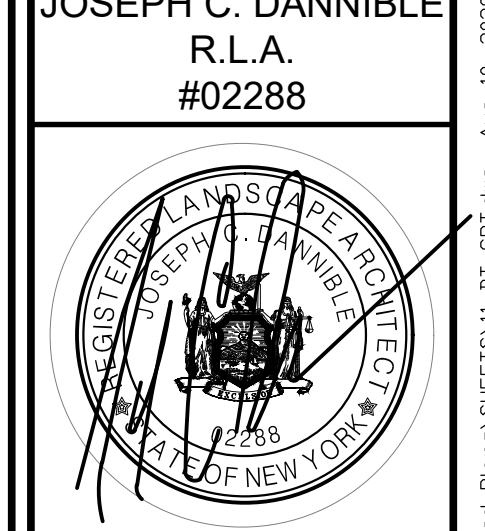
12 CATCH BASIN
5 NOT TO SCALE



13 FLARED END SECTION
5 NOT TO SCALE

DRAWN BY	JMC
CHECK BY	JCD
FOR PROJECT NUMBER	18-000
THE ALTERATION OF THESE DOCUMENTS IN ANY WAY WITHOUT THE WRITTEN CONSENT OF ENVIRONMENTAL DESIGN PARTNERSHIP, LLP. ENGINEERS FOR AN ARCHITECT OR SURVEYOR FOR A SURVEYOR IS A VIOLATION OF THE NEW YORK STATE ENGINEERING AND SURVEYING REGULATIONS AND IS A CLASS "C" VIOLATION.	
REVISION	DATE

JOSEPH C. DANNIBALE
R.L.A.
#02288



SCALE: N.T.S.
SHEET TITLE: SITE DETAILS
SHEET: 5 of 5