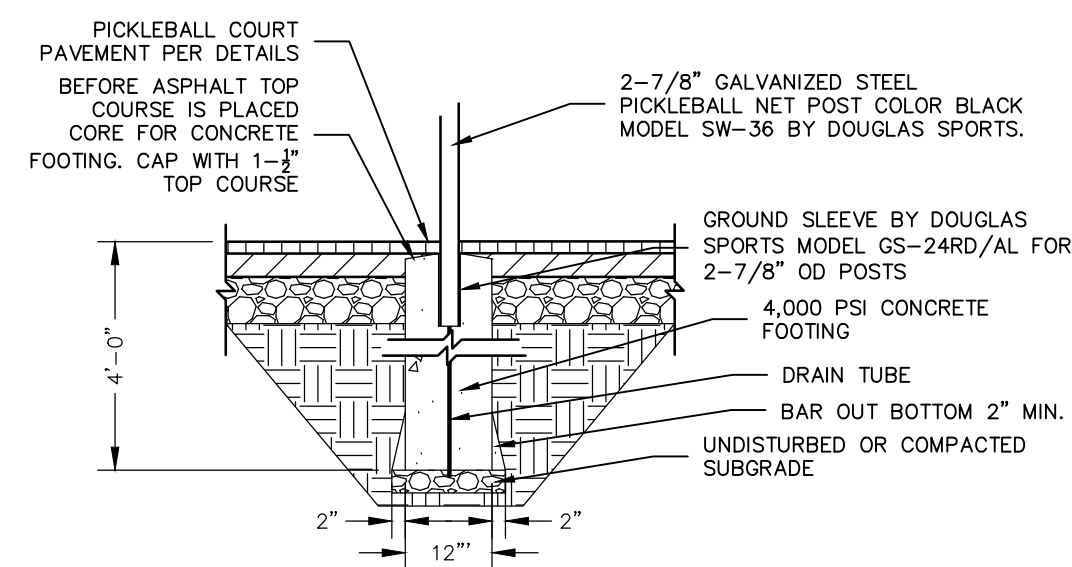
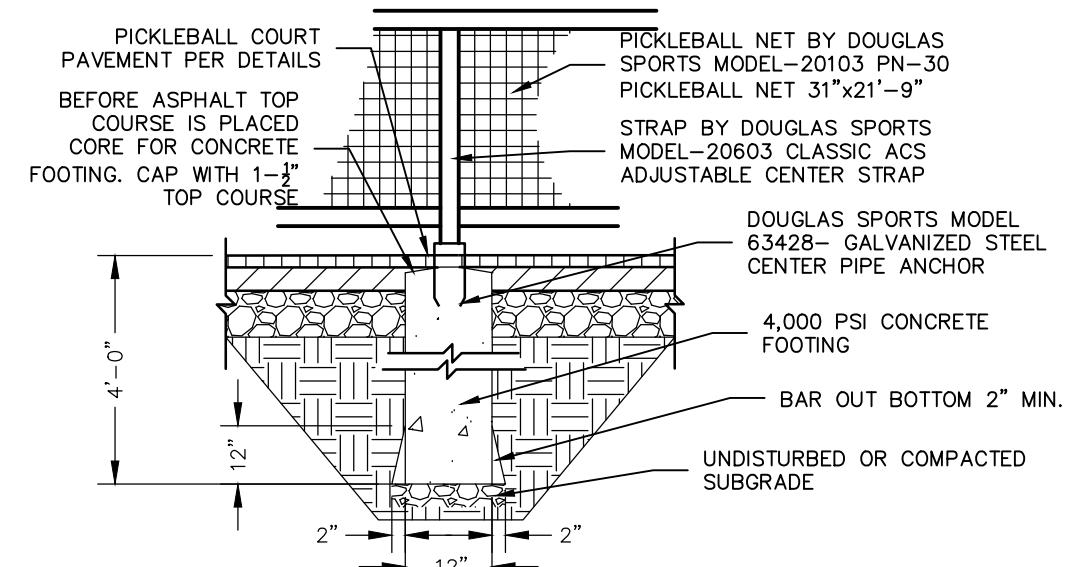


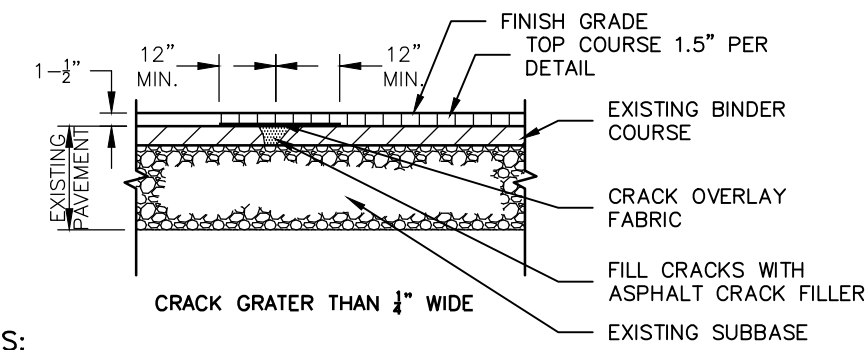
1 PICKLEBALL COURT
NOT TO SCALE



2 PICKLEBALL COURT NET POST
NOT TO SCALE



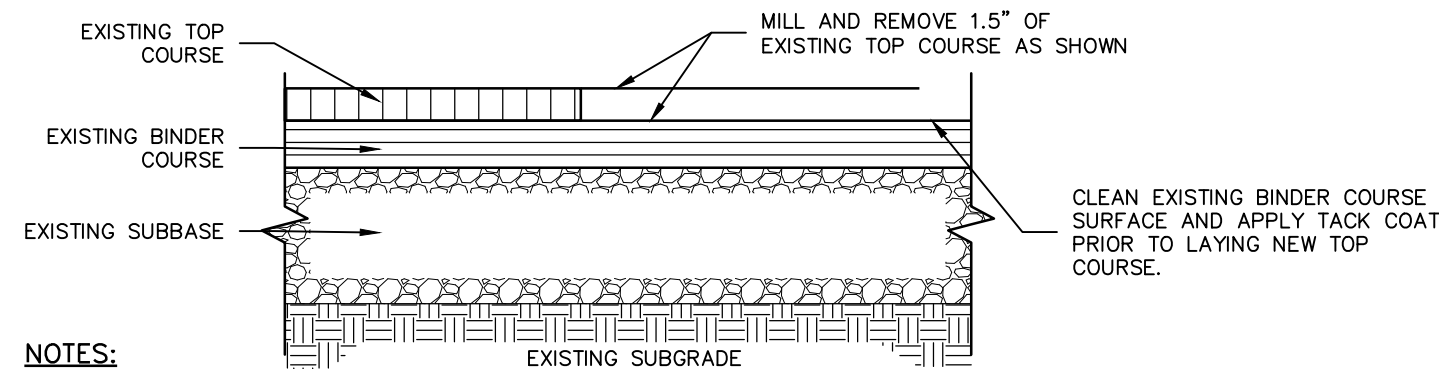
3 PICKLEBALL COURT NET HOLDOWN
NOT TO SCALE



NOTES:

- 1. PRIMARY CRACKS 1/2"–1" WIDE TO BE REPAIRED WITH SEALING.
- 2. CLEAN CRACKS WITH HIGH PRESSURE AIR LANCE PRIOR TO FILLING.
- 3. ALL MATERIALS TO COMPLY WITH NYS DOT 705-02 AND ASTM D6690 TYPE II JOINT AND CRACK SEALANTS, NOT APPLIED, FOR CONCRETE AND ASPHALT PAVEMENTS

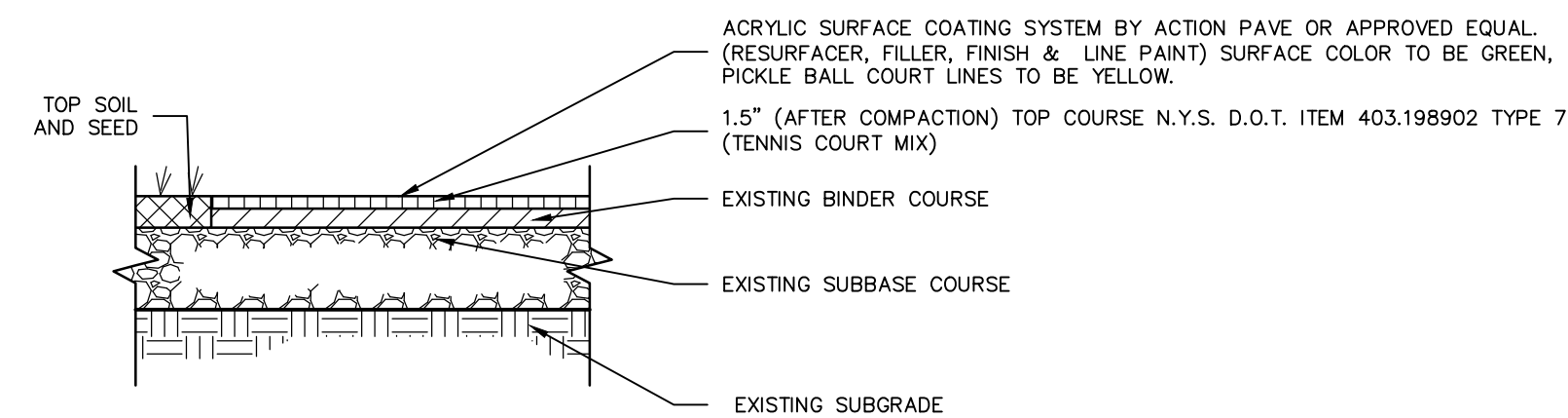
4 CRACK FILL
NOT TO SCALE



NOTES:

- 1. LIMITS OF MILLING ARE THE TOE OF SLOPE OF ASPHALT CURB SURROUNDING COURT.
- 2. CLEAN EXISTING PAVEMENT SURFACE OF LOOSE AND DELETERIOUS MATERIAL IMMEDIATELY BEFORE COLD MILLING.
- 3. KEEP MILLED PAVEMENT SURFACE FREE OF LOOSE MATERIAL AND DUST.
- 4. REPAIR OR REPLACE CURBS, MANHOLES AND OTHER CONSTRUCTION DAMAGED DURING MILLING.
- 5. ALL CRACKS LARGER THAN 1/2" WIDE TO BE REPAIRED PER CRACK FILL DETAIL.
- 6. DO NOT ALLOW MILLED MATERIALS TO ACCUMULATE ON-SITE.
- 7. ANY JOINTS IN BINDER COURSE SHALL RECEIVE 24" WIDE SELF ADHESIVE GEO-COMPOSITE PAVE. PREP (OR APPROVED EQUAL) CENTERED OVER BINDER SEAM.

5 PAVEMENT MILLING
NOT TO SCALE



NOTES:

- 1. APPLICATION OF ACRYLIC SURFACE TO BE PER MANUFACTURER'S RECOMMENDATIONS.

6 PICKLEBALL COURT ASPHALT PAVEMENT
NOT TO SCALE

COURT IMPROVEMENTS FOR VILLAGE GREEN PARK TOWN OF CLIFTON PARK

13 WESTON DRIVE
TOWN OF CLIFTON PARK
SARATOGA COUNTY, NEW YORK

DRAWN BY	JWL
CHECK BY	JCD
EDP PROJECT NUMBER	13711
<small>THE PREPAREDNESS OF THESE DOCUMENTS IS THE RESPONSIBILITY OF THE DESIGN PROFESSIONAL (D.P.) SIGNING FOR AN ENGINEER, LANDSCAPE ARCHITECT, OR A LANDSCAPE ARCHITECT OR ARCHITECT FOR A SUPERVISOR. IT IS A VIOLATION OF THE NEW YORK STATE EDUCATION LAW AND REGULATIONS AND IS A CLASS "A" MISDEMEANOR.</small>	
REVISION	DATE BY

JOHN LYON R.L.A.
002969



SCALE:
AS NOTED

NOT FOR CONSTRUCTION

SHEET TITLE:
SITE DETAILS

SHEET:
4 of 4