

SARATOGA COUNTY SEWER DISTRICT #1

CLIFTON PARK, NEW YORK 12065

CLIFTON PARK TRUNK SEWER REHABILITATION

CONTRACT NO. 19-SDCPTR-1

DECEMBER 2018



LOCUS MAP
SCALE: 1"=1000'

Sheet List Table				
Sheet Number	Sheet Title	Sheet	of	Total
G-0	COVER SHEET	1	of	19
G-1	GENERAL NOTES, LEGEND AND ABBREVIATIONS	2	of	19
C-1	KEY PLAN	3	of	19
C-2	MOE ROAD - STA FM 6+00 TO STA FM 0+00 AND STA 0+00 TO STA 0+50	4	of	19
C-3	MOE ROAD AND NORTHCREST DRIVE - STATION 0+50 TO STATION 21+00	5	of	19
C-4	NORTHCREST DRIVE - STATION 21+00 TO STATION 33+00	6	of	19
C-5	NORTHCREST DRIVE - STATION 33+00 TO STATION 46+00	7	of	19
C-6	STATION 46+00 TO STATION 57+50 CROSSING BEAR BROOK COURT	8	of	19
C-7	STATION 57+50 TO STATION 74+50 SOUTH OF WOODCLIFFE DRIVE	9	of	19
C-8	STATION 74+50 TO STATION 83+50 CROSSING GLENBROOK AND BRUNO ROAD	10	of	19
C-9	ADD ALT 1 - MOE ROAD - FORCE MAIN CIPP LINING	11	of	19
D-1	CONSTRUCTION DETAILS	12	of	19
D-2	CONSTRUCTION DETAILS	13	of	19
D-3	CONSTRUCTION DETAILS	14	of	19
D-4	EROSION AND SEDIMENT CONTROL DETAILS	15	of	19
T-1	TRAFFIC MAINTENANCE AND PROTECTION	16	of	19
T-2	TRAFFIC MAINTENANCE AND PROTECTION	17	of	19
T-3	TRAFFIC MAINTENANCE AND PROTECTION	18	of	19
T-4	TRAFFIC MAINTENANCE AND PROTECTION	19	of	19

Weston & SampsonSM

Weston & Sampson, PE, LS, LA, PC
1 Winners Circle, Suite 130, Albany, N.Y. 12205

SHEET 1 OF 19

LEGEND

DESCRIPTION	EXISTING	PROPOSED
SANITARY SEWER	S	8" S PVC
FORCE MAIN	FM	6" FM DI
WATER MAIN	W	6" W DI
TEMPORARY WATER		4" W
STORM DRAIN	D	18" D RCP
GAS	G	4" G
ELECTRIC	E	E
TELEPHONE	T	T
BUILDING CONNECTION		
CHIMNEY BUILDING CONNECTION		
GRINDER PUMP	⊙	● GP
SANITARY SEWER MANHOLE	⊙	● SMH
STORM DRAIN MANHOLE	⊙	● SDMH
ELECTRICAL MANHOLE	⊙	● EMH
TELEPHONE MANHOLE	⊙	● TMH
AIR RELEASE VALVE MANHOLE	⊙	● ARMH
FORCE MAIN CLEANOUT MANHOLE	⊙	● FMCO
CLEANOUT	⊙	● CO
CATCH BASIN	□	■ CB
CATCH BASIN (CURB INLET)	□	■ CB
HYDRANT	⊙	⊙
TEMPORARY HYDRANT		⊙
GATE VALVE	⊙	⊙
CHECK VALVE	⊙	⊙
CURB STOP	⊙	⊙
BUTTERFLY VALVE	⊙	⊙
BALL VALVE	⊙	⊙
REDUCER	⊙	⊙
CAP OR PLUG	⊙	⊙
GAS GATE VALVE	⊙	⊙
UTILITY POLE	⊙	⊙
GUY POLE	⊙	⊙
LIGHT POST	⊙	⊙
EDGE OF PAVEMENT	—	—
EDGE OF UNPAVED ROAD	—	—
CURB	—	—
SIDEWALK	—	—
RAILROAD	—	—
STONE WALL	—	—
RETAINING WALL	—	—
FENCE	—	—
INDIVIDUAL DECIDUOUS TREE	⊙	⊙
INDIVIDUAL EVERGREEN TREE	⊙	⊙
TREE LINE	—	—
SURVEY MARKER	⊙	⊙
PROPERTY LINE	—	—
EASEMENT LINE	—	—
LIMIT OF WORK	—	—
APPROX. LIMIT OF REFUSE	—	—
SPOT ELEVATIONS	x 141.5	x 141.5
CONTOUR LINES	—56—	—56—
DEPRESSION CONTOUR LINES	—	—
HOUSE NUMBER	#35	#35
FLOOR ELEVATION	FL=56.7	FL=56.7
SILL ELEVATION	S=56.7	S=56.7
WETLAND	—	—
WETLAND FLAGS	—	—
RIP RAP	—	—
STATE HIGHWAY STATION	○	○
SURFACE MOUNTED DELINEATOR	△	▲
GUARD POST	△	▲
BOLLARD	○ B	● B
SIGN	—	—
BENCH MARK	⊙	⊙
AUGER	⊕ A-1	⊕ A-1
PERCOLATION TEST	⊕ 1	⊕ PT-1
TEST PIT	⊕ 1	⊕ TP-1
BORING	⊕ B-10	⊕ B-11
PROBE	⊕ P-10	⊕ P-11
GROUNDWATER MONITORING WELL	⊕ WS-1	⊕ WS-1
GAS MONITORING WELL	⊕ GMW-10	⊕ GMW-10
GAS VENT	○ GV	● GV
HAY BALES	—	—
ROCK OUTCROP	—	—
DRAINAGE DITCH / SWALE	—	—

NOTE: ITEMS SHOWN IN THE LEGEND MAY NOT BE PRESENT IN THESE PLANS

ABBREVIATIONS

AC	ASBESTOS CEMENT PIPE
ACCOMP	ASPHALT COATED CORRUGATED METAL PIPE
ARV	AIR RELEASE VALVE
ASTM	AMERICAN SOCIETY FOR TESTING AND MATERIALS
BC	BITUMINOUS CONCRETE
BIT	BITUMINOUS
BLDG	BUILDING
BM	BENCH MARK
BO	BLOW OFF
BV	BUTTERFLY VALVE
CATV	CABLE TELEVISION
CB	CATCH BASIN
CC	CONCRETE CURB
CI	CAST IRON
CL	CENTERLINE
CL	CEMENT LINED
CMP	CORRUGATED METAL PIPE
CONC	CONCRETE
CU FT	CUBIC FEET
CY	CUBIC YARD
D	STORM DRAIN, DEPTH FROM RIM TO INVERT
DI	DROP INLET, DUCTILE IRON
DIA	DIAMETER
DMH	DRAIN MANHOLE
DWG	DRAWING
E	EAST, ELECTRIC
EA	EACH
EF	EACH FACE
ELEV	ELEVATION
EOP	EDGE OF PAVEMENT
EW	EACH WAY
EXIST	EXISTING
FLG	FLANGE
FT	FEET, FOOT
G	NATURAL GAS
GALV	GALVANIZED
GC	GRANITE CURB
GR	GRANITE
HC	HOUSE CONNECTION
HORIZ	HORIZONTAL
HP	HIGH PRESSURE
HYD	FIRE HYDRANT
I	INVERT
INV	INVERT
ID	INSIDE DIAMETER
IP	IRON PIPE
LB	POUND
LF	LINEAR FEET
LS	LUMP SUM
MAX	MAXIMUM
MB	MAIL BOX
MECH	MECHANICAL
MH	MANHOLE
MIN	MINIMUM
MISC	MISCELLANEOUS
MJ	MECHANICAL JOINT
N	NORTH
NE	NORTH EAST
NW	NORTH WEST
NF	NOT FOUND
NO OR #	NUMBER
OD	OUTSIDE DIAMETER
PCCP	PRESTRESSED CONCRETE CYLINDER PIPE
PE	PLAIN END, POLYETHYLENE
R	PROPERTY LINE
PL	PLATE
PVC	POLYVINYL CHLORIDE
PVMT	PAVEMENT
RCP	REINFORCED CONCRETE PIPE
ROW	RIGHT-OF-WAY
RQD	ROCK QUALITY
S	SEWER, SOUTH
SE	SOUTH EAST
SECT	SECTION
SF	SQUARE FEET
SHT	SHEET
SPEC	SPECIFICATIONS
SQ FT	SQUARE FEET
SS	SEWER SERVICE, STAINLESS STEEL
STA	STATION
STL	STEEL
SW	SIDEWALK, SOUTH WEST
T	HYDROSTATIC THRUST, TELEPHONE
TBM	TEMPORARY BENCH MARK
THK	THICK (NESS)
TYP	TYPICAL
UP	UTILITY POLE
VC	VITRIFIED CLAY
VERT	VERTICAL
W	WEST
W/	WITH
W/O	WITHOUT

CONSTRUCTION NOTES:

1. THE CONTRACTOR SHALL CALL "DIG SAFELY NEW YORK" AT 1-800-962-7962 AT LEAST 48 HOURS, SATURDAYS, SUNDAYS, AND HOLIDAYS EXCLUDED, PRIOR TO EXCAVATING AT ANY LOCATION.
2. LOCATIONS OF EXISTING PIPES, CONDUITS, UTILITIES, FOUNDATIONS AND OTHER UNDERGROUND OBJECTS ARE NOT WARRANTED TO BE CORRECT AND THE CONTRACTOR SHALL HAVE NO CLAIM ON THAT ACCOUNT SHOULD THEY BE OTHER THAN SHOWN.
3. TEST PITS TO LOCATE EXISTING UTILITIES MAY BE REQUIRED BY THE ENGINEER.
4. STONE WALLS, FENCES, MAIL BOXES, SIGNS, CURBS, LIGHT POLES, ETC. SHALL BE REMOVED AND REPLACED TO A CONDITION AT LEAST EQUAL TO THAT BEFORE CONSTRUCTION BEGAN AS NECESSARY TO PERFORM THE WORK. UNLESS OTHERWISE INDICATED, ALL SUCH WORK SHALL BE INCIDENTAL TO CONSTRUCTION OF THE PROJECT.
5. ALL PAVEMENT DISTURBED BY THE CONTRACTOR'S OPERATIONS SHALL BE REPLACED IN KIND OR AS PER ENGINEER AT NOT ADDITIONAL COST TO THE OWNER.
6. ALL AREAS DISTURBED BY THE CONTRACTOR BEYOND PAYMENT LIMITS SHALL BE RESTORED AT NO ADDITIONAL COST TO THE OWNER.
7. CONCRETE CRADLES OR ARCHES SHALL BE CONSTRUCTED WHERE SHOWN ON THE DRAWINGS OR WHERE REQUIRED BY THE ENGINEER. UNLESS OTHERWISE INDICATED, CONCRETE USED FOR PIPE ANCHOR BLOCKS, BACKING, PIPE CRADLES, ARCHES, AND FILL SHALL HAVE A MINIMUM COMPRESSIVE STRENGTH OF 4000 PSI AT 28 DAYS.
8. THE CONTRACTOR SHALL NOT STORE ANY APPARATUS, MATERIALS, SUPPLIES, OR EQUIPMENT ON DRAINAGE STRUCTURES OR WITHIN 100 FEET OF WETLANDS.
9. SEWER TRENCHES MAY BE EXCAVATED WIDER THAN THE 'LIMIT OF EXCAVATION AND PAYMENT FOR EARTH EXCAVATION' ABOVE THE 'LINE OF NARROW TRENCH LIMIT.' ANY SUCH ADDITIONAL EXCAVATION SHALL BE AT THE CONTRACTORS EXPENSE AND SHALL NOT BE MEASURED FOR PAYMENT.
10. BELOW THE 'LINE OF NARROW TRENCH LIMIT' THE TRENCH SHOULD NOT BE EXCAVATED BEYOND THE TRENCH WIDTH 'W'. IF MATERIAL IS LOOSENEED OR REMOVED BEYOND THE ABOVE MENTIONED LIMITS, THE CONTRACTOR WILL BE REQUIRED TO PROVIDE CRUSHED STONE FOR THE FULL WIDTH OF THE TRENCH AT NO ADDITIONAL COST TO THE OWNER.
11. SHEETING TO BE LEFT IN PLACE SHALL BE USED WHERE SHOWN ON THE DRAWINGS OR WHERE REQUIRED BY THE ENGINEER. IT SHALL BE LEFT IN PLACE BELOW A LINE 12 INCHES ABOVE THE TOP OF THE PIPE UNLESS OTHERWISE REQUIRED BY THE ENGINEER.
12. FOR REPLACEMENT OF MANHOLES, MATCH EXISTING MANHOLE DIAMETER TO REPLACEMENT MANHOLE DIAMETER, UNLESS OTHERWISE SPECIFIED.
13. OPENINGS FOR PIPE IN PRECAST MANHOLE BASES SHALL BE CAST IN THE REQUIRED LOCATIONS DURING MANHOLE MANUFACTURE. FIELD CUT OPENINGS WILL NOT BE PERMITTED UNLESS APPROVED BY THE ENGINEER.
14. THE EXISTING SEWER MAINS SHALL BE MAINTAINED AND PROTECTED THROUGHOUT THE DURATION OF THE PROJECT IN ACCORDANCE WITH SECTION 01575.
15. THE CONTRACTOR SHALL RESTORE AND MAINTAIN PAVEMENT AND PAVEMENT MARKINGS IN ACCORDANCE WITH THE OWNERS REQUIREMENTS AT NO ADDITIONAL COST TO THE OWNER.
16. PASSAGE OF TRAFFIC ON ROADWAYS SHALL BE MAINTAINED AT ALL TIMES. THE CONTRACTOR SHALL PERFORM HIS OPERATIONS TO MINIMIZE DISRUPTIONS TO TRAFFIC. COMPLETE ROADWAY CLOSURE WITHOUT PRIOR APPROVAL FROM THE OWNER WILL NOT BE PERMITTED. AT A MINIMUM, CONTRACTOR SHALL PERFORM HIS OPERATIONS UTILIZING ALTERNATING ONE-WAY TRAFFIC PATTERNS.
17. FORM CONCRETE INVERTS IN MANHOLES WITH CONCRETE ON EDGE TO A DEPTH OF 0.8 INCHES INSIDE DIAMETER OF PIPE AND FORM A 1 INCH SLOPED BENCH WITH CONCRETE FLAT. INVERT SHALL BE SLOPED UNIFORMLY BETWEEN INLET AND OUTLET PIPE AND SHALL BE FORMED AND FILLED AS REQUIRED TO DIRECT THE FLOW AS INDICATED AND TO PREVENT DEPOSITION OF SOLIDS.
18. IN PAVED AREAS THE TOP OF THE MANHOLE COVER SHALL BE SET FLUSH WITH THE PAVED SURFACE. IN OTHER AREAS THE TOP OF THE COVER SHALL EXTEND 6 INCHES ABOVE FINISHED GRADE, OR AS SHOWN ON THE DRAWINGS, OR AS REQUIRED BY THE ENGINEER.
19. SEWER CHIMNEY AND HOUSE CONNECTION LOCATIONS ARE SHOWN FOR ESTIMATING PURPOSES, AND ARE APPROXIMATE IN LOCATION. EXACT LOCATIONS WILL BE DETERMINED BY THE ENGINEER IN THE FIELD.
20. PROTECTION OF WATER SUPPLIES - WHENEVER A SEWER MUST CROSS UNDER A WATER MAIN, THE SEWER SHALL BE LAID AT SUCH AN ELEVATION THAT THE TOP OF THE SEWER IS AT LEAST 18 INCHES BELOW THE BOTTOM OF THE WATER MAIN. WHEN THE ELEVATION OF THE SEWER CANNOT BE VARIED TO MEET THE ABOVE REQUIREMENT, THE WATER MAIN SHALL BE RELOCATED BY THE CONTRACTOR AS REQUIRED BY THE ENGINEER TO PROVIDE THIS SEPARATION OR THE CONTRACTOR SHALL CONSTRUCT THE NEW SEWER OF CLASS 150 PRESSURE PIPE FOR A DISTANCE OF 10 FEET ON EACH SIDE OF THE WATER MAIN. ONE FULL LENGTH OF CLASS 150 PRESSURE PIPE SEWER SHOULD BE CENTERED ON THE WATER MAIN AS MUCH AS POSSIBLE. THE SEWER CONSTRUCTED OF THE PRESSURE PIPE MUST BE PRESSURE TESTED TO ASSURE WATER TIGHTNESS.
21. CALCULATION OF PIPE SLOPES IS BASED ON ELEVATION CHANGES DIVIDED BY THE DISTANCE BETWEEN THE OUTSIDE EDGES OF THE MANHOLE WALLS. FOR FOUR FOOT DIAMETER MANHOLES, THIS DISTANCE WAS CALCULATED AS THE CENTERLINE STATIONING MINUS FIVE FEET. FOR FIVE FOOT DIAMETER MANHOLES, THIS DISTANCE WAS CALCULATED AS THE CENTERLINE STATIONING MINUS SIX FEET. 'IN' INDICATES UPSTREAM END OF MANHOLE, 'OUT' INDICATES DOWNSTREAM END OF MANHOLE.
22. ALL STREET EXCAVATIONS SHALL BE COMPLETELY CLOSED AT THE END OF EACH WORKING DAY BY BACKFILLING OR COVERING WITH STEEL PLATES.
23. THE CONTRACTOR MUST GIVE THE ENGINEER AT LEAST 10 DAYS' NOTICE PRIOR TO PERFORMING ANY WORK IN WETLANDS.

BYPASS NOTES:

1. CONTRACTOR SHALL TRENCH AND BURY TEMPORARY BYPASS PIPING AT ALL SIDEWALKS, ROAD, WALKWAY, AND DRIVEWAY CROSSINGS. CONTRACTOR SHALL INSTALL NON-SKID, RECESSED STEEL PLATES AT ALL LOCATIONS WHERE UTILITY CONFLICTS DO NOT ALLOW FOR THE TEMPORARY BYPASS PIPING TO BE BURIED AT THE DEPTH REQUIRED IN THE TEMPORARY PAVEMENT WITH TEMPORARY BYPASS PIPE DETAIL ON SHEET D-3. STEEL PLATES SHALL BE PINNED AND COLD PATCHED.
2. CONTRACTOR SHALL INSTALL TEMPORARY PAVEMENT AT CROSSINGS AFTER BURYING TEMPORARY BYPASS PIPING.
3. CONTRACTOR SHALL HANDLE ALL FLOW FROM FORCEMAIN FLOWING INTO MANHOLE B-83D TO DOWNSTREAM OF MANHOLE B-56 DURING INSTALLATION OF BYPASS CONNECTION. CONTRACTOR SHALL INSTALL LINE STOP AND TAPPING SLEEVE TO BYPASS FLOW TO MANHOLE B-83D DURING INSTALLATION OF BYPASS CONNECTION.
4. CONTRACTOR SHALL HANDLE ALL LOCAL SEWER FLOW DURING THE WORK.
5. ALL DUCTILE IRON PIPE AND FITTINGS THAT REMAIN IN PLACE SHALL BE WRAPPED IN POLYETHYLENE.
6. ABOVE GROUND TEMPORARY BYPASS PIPING SHALL NOT INTERFERE WITH SIDEWALKS AND EXISTING MANHOLE/VAULT ACCESS.
7. CONTRACTOR SHALL CLEAN AND INSPECT SEWERS WHILE THE BYPASS IS IN OPERATION.
8. SITE SAFETY IS THE RESPONSIBILITY OF THE CONTRACTOR. BYPASS PUMPS SHALL BE SECURED BY TEMPORARY CHAIN LINK FENCE.
9. INCLUDE PEAKING FACTOR AS PART OF BYPASS PUMP SIZING CALCULATIONS TO BE SUBMITTED TO ENGINEER FOR REVIEW.
10. CONTRACTOR SHALL BE RESPONSIBLE FOR MAINTAINING ALL DRIVEWAY/SIDEWALK/ROADWAY CROSSINGS THROUGHOUT THE DURATION OF BYPASSING OPERATIONS REGARDLESS OF WHETHER THEY ARE EXPLICITLY NOTED ON THE PLANS.

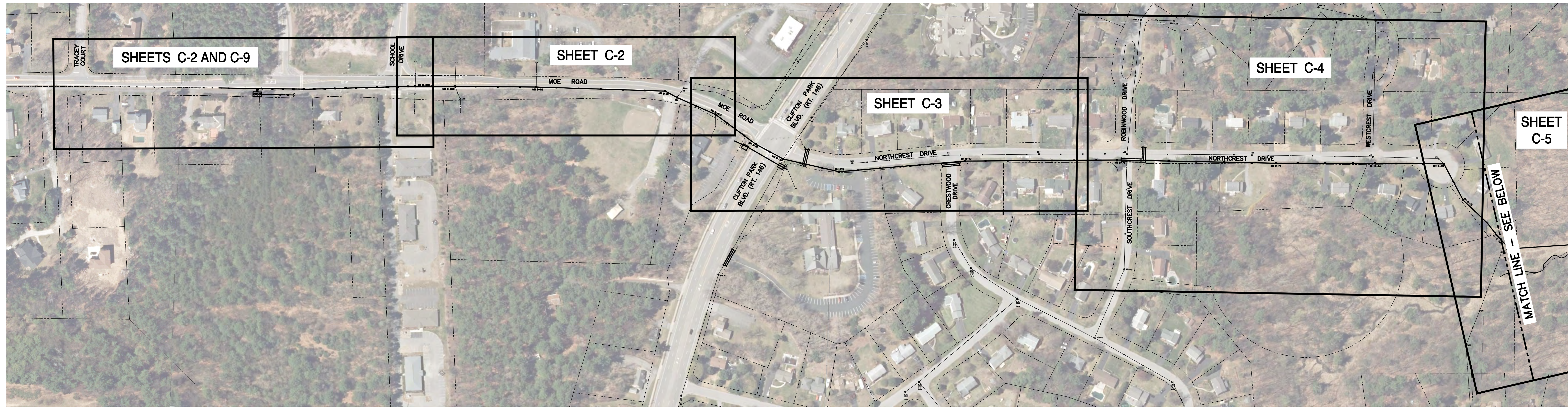
GENERAL NOTES:

1. THE APPROXIMATE LOCATION OF THE PROPOSED SEWERS ARE INDICATED ON THE PLANS, BUT THE ACTUAL LOCATION WILL BE GOVERNED BY THE ACTUAL LOCATION OF THE UNDERGROUND UTILITIES OR OTHER CONTROLLING FACTORS AS DETERMINED BY THE ENGINEER DURING CONSTRUCTION.
2. ROADWAY DRAINAGE SHALL BE MAINTAINED THROUGHOUT THE PERIOD OF CONSTRUCTION IN ACCORDANCE WITH SECTION 01575.
3. THE CONTRACTOR'S ATTENTION IS DIRECTED TO THE FACT THAT, DUE TO THE NATURE OF RECONSTRUCTION PROJECTS, THE EXACT EXTENT OF RECONSTRUCTION WORK CANNOT ALWAYS BE ACCURATELY DETERMINED PRIOR TO THE COMMENCEMENT OF WORK. THESE CONTRACT DOCUMENTS HAVE BEEN PREPARED BASED ON FIELD INSPECTION AND OTHER INFORMATION AVAILABLE AT THE TIME. ACTUAL FIELD CONDITIONS MAY REQUIRE MODIFICATIONS IN CONSTRUCTION DETAILS AND WORK QUANTITIES. THE CONTRACTOR SHALL VERIFY ALL EXISTING CONDITIONS AND DIMENSIONS IN THE FIELD AND SHALL PERFORM THE WORK TO MEET FIELD CONDITIONS. THE CONTRACTOR SHALL PERFORM ALL REPAIR WORK AS SHOWN ON THE PLANS IN ACCORDANCE WITH THE CONTRACT SPECIFICATIONS AND AS REQUIRED BY THE ENGINEER.
4. THE CONTRACTOR SHALL COMPLETE ALL WORK IN A MANNER SUCH THAT ANY MATERIALS WHICH ARE TO REMAIN IN PLACE WILL NOT BE DAMAGED. IF THE CONTRACTOR DAMAGES ANY MATERIALS WHICH ARE TO REMAIN IN PLACE, THE DAMAGED MATERIALS SHALL BE REPAIRED OR REPLACED IN A MANNER SATISFACTORY TO THE ENGINEER AT THE EXPENSE OF THE CONTRACTOR.
5. THE CONTRACTOR SHALL GIVE PARTICULAR ATTENTION AND CARE TO PROTECT FROM DAMAGE ALL EXISTING STRUCTURES TO REMAIN AND VEGETATION, INCLUDING TURF, TREES AND SHRUBS NOT IN THE CONTRACT AREA.
6. WHENEVER ITEMS IN THE CONTRACT REQUIRE MATERIALS TO BE REMOVED AND DISPOSED OF, THE COST OF SUPPLYING A DISPOSAL AREA AND TRANSPORTATION TO THAT AREA SHALL BE INCLUDED IN THE PRICE BID.
7. THE CONTRACTOR SHALL BE RESPONSIBLE FOR GRADING AND RE-SEEDING ANY EARTH AREA DISTURBED BY HIS OPERATION WITHIN OR OUTSIDE OF THE ACTUAL WORK AREA AND AS REQUIRED BY THE ENGINEER. ALL THE WORK SHALL BE DONE IN A WORKMANLIKE MANNER AND TO THE SATISFACTION OF THE ENGINEER. THE COST(S) ASSOCIATED WITH GRADING AND RE-SEEDING SHALL BE INCIDENTAL TO THE PROJECT.
8. MAINTENANCE AND PROTECTION OF BOTH VEHICULAR AND PEDESTRIAN TRAFFIC SHALL BE PERFORMED IN ACCORDANCE WITH THE LATEST EDITION OF THE MANUAL OF UNIFORM TRAFFIC CONTROL DEVICES (MUTCD) AS PUBLISHED BY THE U.S. DEPARTMENT OF TRANSPORTATION, AS WELL AS THE NEW YORK STATE DEPARTMENT OF TRANSPORTATION SUPPLEMENT TO THE MUTCD, A.O.B.E., WITH THE SPECIFICATIONS, AND AS SHOWN ON THE DRAWINGS.
9. THE CONTRACTOR SHALL INSTALL TEMPORARY EROSION CONTROL DEVICES IN ACCORDANCE WITH THE SPECIFICATIONS AND AS SHOWN ON THE DRAWINGS, OR A.O.B.E.
10. THE DESIGN AND LOCATION OF SANITARY FACILITIES (WATER AND SEWER SYSTEMS) SHALL NOT BE CHANGED UNLESS APPROVED BY THE ENGINEER.
11. UNLESS OTHERWISE SPECIFICALLY NOTED OR IDENTIFIED, ALL PRE-EXISTING CONDITIONS SHALL BE FULLY RESTORED TO THE SATISFACTION OF THE ENGINEER.
12. THIS SHEET IS INCOMPLETE AND INVALID UNLESS ACCOMPANIED BY EACH OF THE OTHER SHEETS.
13. WORK SHALL BE STAGED SUCH THAT ACCESS FOR EMERGENCY VEHICLES IS MAINTAINED. RESIDENTS SHALL HAVE ACCESS TO DRIVEWAYS OR ALTERNATE PARKING SHALL BE PROVIDED.
14. MAPPING IS BASED ON GIS DATA PROVIDED BY THE SARATOGA COUNTY SEWER DISTRICT NO. 1.
15. CONTRACTOR SHALL BE AWARE OF HYDROGEN SULFIDE LEVELS IN THE 20-INCH FORCE MAIN AND THE GRAVITY SEWERS DOWNSTREAM THAT EXCEED OSHA WORKER EXPOSURE LIMITS.

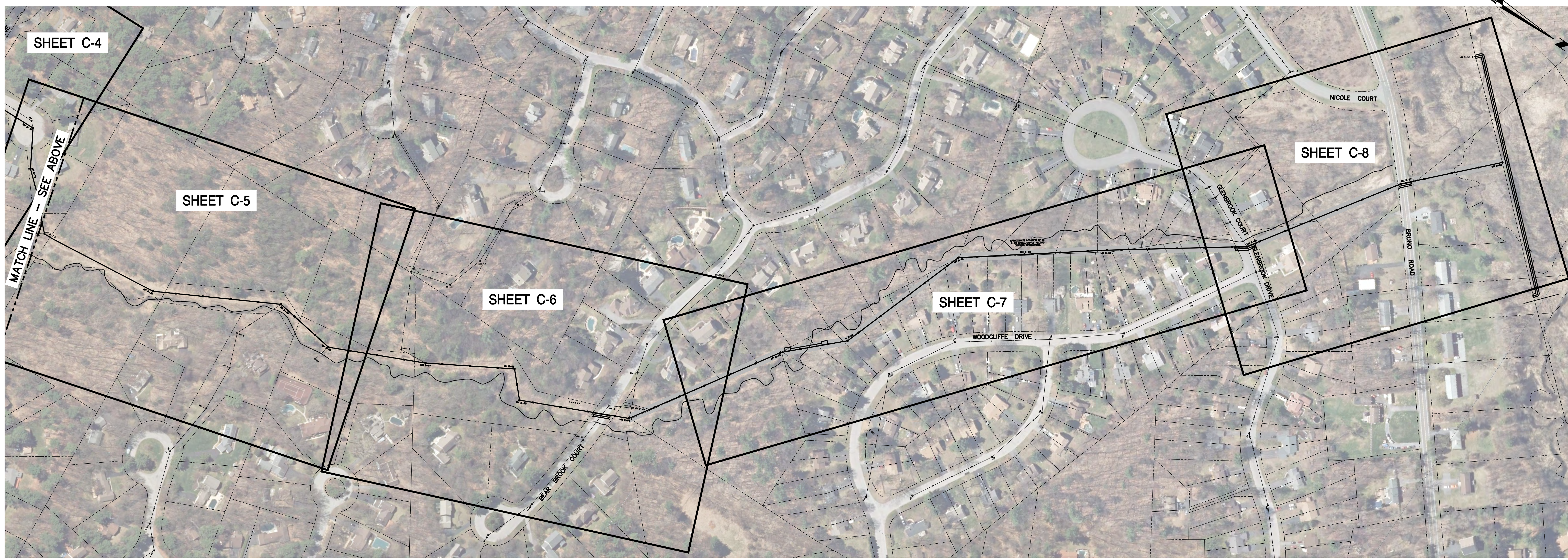
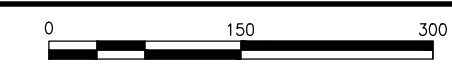
No.	Date	Dr. By	Ch. By	App. By	Description
		A	P	R	O
					V
					E
					D

REGISTERED PROFESSIONAL ENGINEER

COPYRIGHT © 2018 BY WESTON & SAMPSON, P.E., L.S., L.A., P.C. THIS DRAWING IS AN INSTRUMENT OF SERVICE AND IS THE PROPERTY OF WESTON & SAMPSON, P.E., L.S., L.A., P.C. THIS DRAWING MAY NOT BE REPRODUCED IN WHOLE OR IN PART BY ANY MEANS WHATSOEVER WITHOUT THE EXPRESS WRITTEN CONSENT OF WESTON & SAMPSON, P.E., L.S., L.A., P.C. UNAUTHORIZED ALTERATION OR ADDITION TO THIS DOCUMENT IS A VIOLATION OF SECTION 2000, SUBDIVISION 2 OF THE NEW YORK STATE EDUCATION LAW.



1 MOE ROAD AND NORTHCREST DRIVE
SCALE: 1" = 150'



2 BEAR BROOK COURT, GLENBROOK COURT AND BRUNO ROAD
SCALE: 1" = 150'



COPYRIGHT © 2018 BY WESTON & SAMPSON, P.E., L.S., L.A., P.C. THIS DRAWING IS AN INSTRUMENT OF SERVICE AND IS THE PROPERTY OF WESTON & SAMPSON, P.E., L.S., L.A., P.C. THIS DRAWING MAY NOT BE REPRODUCED IN WHOLE OR IN PART BY ANY MEANS WHATSOEVER WITHOUT THE EXPRESS WRITTEN CONSENT OF WESTON & SAMPSON, P.E., L.S., L.A., P.C. UNAUTHORIZED ALTERATION OR ADDITION TO THIS DOCUMENT IS A VIOLATION OF SECTION 2005, SUBDIVISION 2 OF THE NEW YORK STATE EDUCATION LAW.

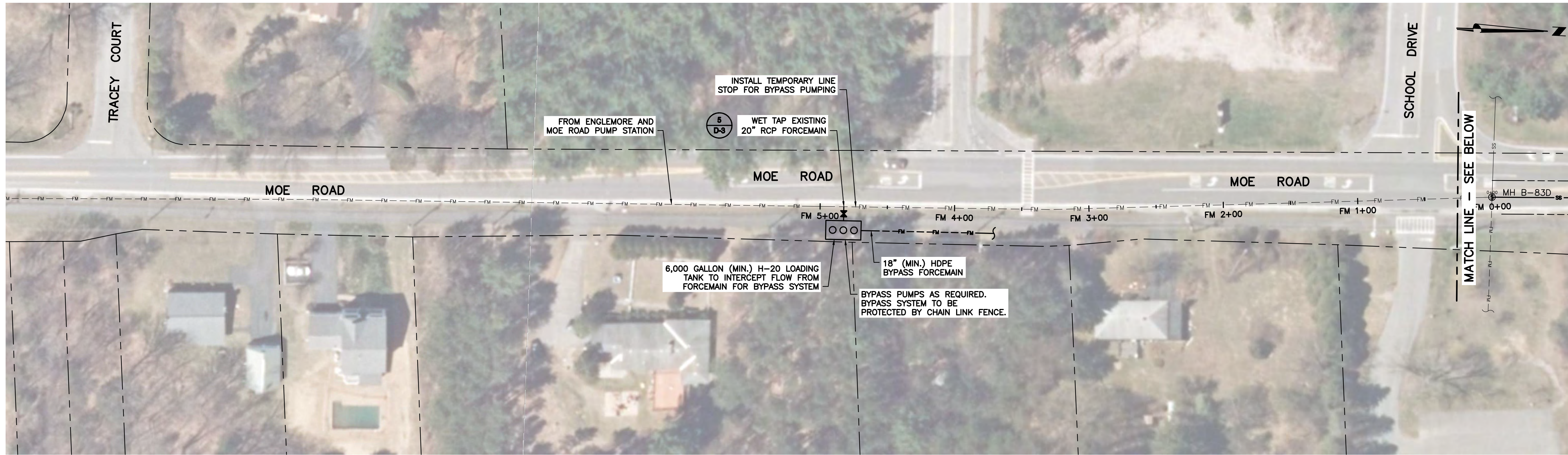
No.	Date	Dr. By	Ch. By	App. By	Description
		A	P	R	O
					V
					E
					D

REGISTERED PROFESSIONAL ENGINEER _____ DATE _____

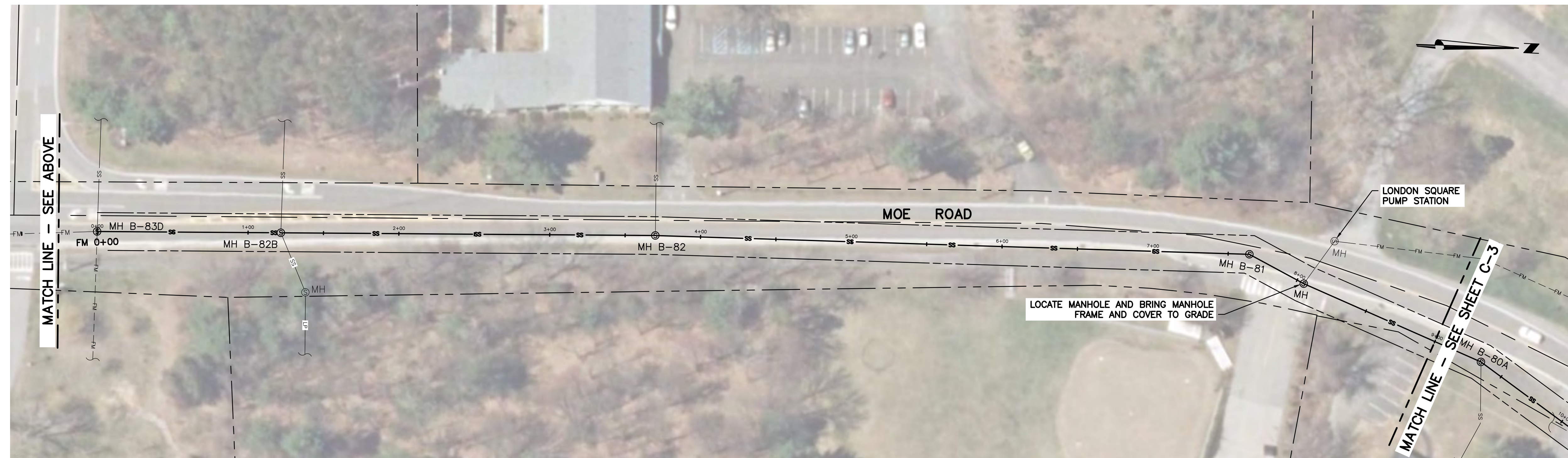
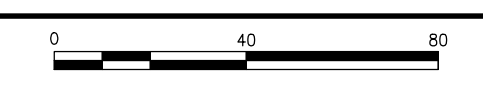
SARATOGA COUNTY SEWER DISTRICT #1
CLIFTON PARK TRUNK SEWER REHABILITATION

KEY PLAN

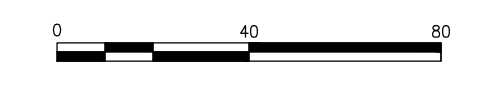
CADD NO. C-1 SCALE: AS SHOWN CONTRACT: 19-SDCP-TR-1 N2180029 DR. BY: VLB DSN. BY: JAS CHK. BY: JMZ APP. BY: JFB



1 MOE ROAD - STATION FM 6+00 TO STATION FM 0+00 AND STATION 0+00 TO STATION 0+50
SCALE: 1" = 40'



2 MOE ROAD - STATION FM 0+50 TO STATION FM 0+00 AND STATION 0+00 TO STATION 9+00
SCALE: 1" = 40'



CURED-IN-PLACE PIPE LINER SCHEDULES					
UPSTREAM MH	DOWNSTREAM MH	STREET/LOCATION	PIPE DIA (IN)	MATERIAL	LENGTH (FT)
B-83D	B-82	MOE ROAD	24	RCP	373
B-82	B-81	MOE ROAD	24	RCP	396
B-81	MH	MOE ROAD	24	RCP	42
MH	B-80A	MOE ROAD	24	RCP	131
B-80A	B-80	MOE ROAD	24	RCP	154
B-80	B-79	NYS ROUTE 146	24	RCP	98
B-79	B-78	NORTHCREST DRIVE	24	RCP	174
B-78	B-77	NORTHCREST DRIVE	24	RCP	368
B-77	B-76	NORTHCREST DRIVE	24	RCP	463

MANHOLE REHABILITATION SCHEDULE					
MANHOLE	STREET/LOCATION	MATERIAL	INVERT	# OF INVERTS	REHABILITATION METHOD
B-83D	MOE ROAD	PRECAST CONCRETE	9' 5"	4	FRP MANHOLE INSERT
B-82B	MOE ROAD	PRECAST CONCRETE	9' 8"	4	FRP MANHOLE INSERT
B-82	MOE ROAD	PRECAST CONCRETE	9' 5"	3	FRP MANHOLE INSERT
B-81	MOE ROAD	PRECAST CONCRETE	9' 4"	2	FRP MANHOLE INSERT
MH	MOE ROAD	PRECAST CONCRETE	N/A	3	FRP MANHOLE INSERT
B-80A	MOE ROAD	PRECAST CONCRETE	11' 5"	3	FRP MANHOLE INSERT
B-80	NYS ROUTE 146	PRECAST CONCRETE	15' 4"	2	ABANDONMENT
B-79	NORTHCREST DRIVE	PRECAST CONCRETE	14' 6"	5	FRP MANHOLE INSERT
B-78	NORTHCREST DRIVE	PRECAST CONCRETE	14' 6"	2	FRP MANHOLE INSERT
B-77	NORTHCREST DRIVE	PRECAST CONCRETE	11' 7"	2	FRP MANHOLE INSERT

NOTES:

- ELEVATIONS OF EXISTING UTILITIES AND DEPTHS, DIAMETER AND CONFIGURATION OF MANHOLES TO BE VERIFIED IN THE FIELD BY THE CONTRACTOR.
- ALL SEWER SEGMENTS TO BE TELEVIEWED AND CLEANED PRIOR TO INSTALLING CIPP LINER. CHEMICAL ROOT TREATMENT TO BE USED ONLY WHERE MECHANICAL REMOVAL IS NOT FEASIBLE AND ONLY UPON APPROVAL OF THE ENGINEER AND IN ACCORDANCE WITH THE SPECIFICATIONS.
- MANHOLES SHALL BE RE-POINTED, BENCHES REPAIRED, INVERTS SEALED, AND EXTERIOR CHEMICAL GROUTED (IF REQUIRED) PRIOR TO CEMENTITIOUS LINING.
- MANHOLES SHALL BE CLEANED AND PREPARED IN ACCORDANCE WITH MANUFACTURER'S REQUIREMENTS PRIOR TO APPLICATION OF CEMENTITIOUS LINING.

COPYRIGHT © 2018 BY WESTON & SAMPSON, PE, L.S., L.A., P.C. THIS DRAWING IS AN INSTRUMENT OF SERVICE AND IS THE PROPERTY OF WESTON & SAMPSON, PE, L.S., L.A., P.C. THIS DRAWING MAY NOT BE REPRODUCED IN WHOLE OR IN PART BY ANY MEANS WHATSOEVER WITHOUT THE EXPRESS WRITTEN CONSENT OF WESTON & SAMPSON, PE, L.S., L.A., P.C. UNAUTHORIZED ALTERATION OR ADDITION TO THIS DOCUMENT IS A VIOLATION OF SECTION 2085, SUBDIVISION 2 OF THE NEW YORK STATE EDUCATION LAW.

No.	Date	Dr. By	Chk. By	App. By	Description
		A	P	R	O
					V
					E
					D

REGISTERED PROFESSIONAL ENGINEER _____ DATE _____

SARATOGA COUNTY SEWER DISTRICT #1
CLIFTON PARK TRUNK SEWER REHABILITATION
MOE ROAD - STA FM 6+00 TO STA FM 0+00
AND STA 0+00 TO STA 9+00

SCALE: 1" = 40'
C-2
CADD NO. _____
JOB NO. N2180029
CONTRACT: 19-SDCPTR-1
DR BY: VLB
DSN BY: JAS
CHK BY: JMZ
APP BY: JFB
FILE NO. _____
C-2
SHEET 4 OF 19



1 NORTHCREST DRIVE - STATION 21+00 TO STATION 33+00
SCALE: 1" = 40'

CURED-IN-PLACE PIPE LINER SCHEDULES				
UPSTREAM MH	DOWNSTREAM MH	STREET/LOCATION	PIPE DIA. (IN)	LENGTH (FT)
B-76	B-75	NORTHCREST DRIVE	21	481
B-75	B-74	NORTHCREST DRIVE	21	307
B-74	B-73	NORTHCREST DRIVE	21	208
B-73	B-72	NORTHCREST DRIVE	21	119

MANHOLE REHABILITATION SCHEDULE					
MANHOLE	STREET/LOCATION	MATERIAL	INVERT	# OF INVERTS	REHABILITATION METHOD
B-76	NORTHCREST DRIVE	PRECAST CONCRETE	9' 2"	2	FRP MANHOLE INSERT
B-75	NORTHCREST DRIVE	PRECAST CONCRETE	8' 1"	2	FRP MANHOLE INSERT
B-74	NORTHCREST DRIVE	PRECAST CONCRETE	8' 6"	2	ABANDONMENT
B-73	NORTHCREST DRIVE	PRECAST CONCRETE	10' 4"	3	FRP MANHOLE INSERT

TRIBUTARY FLOW SCHEDULE	
Northcrest	
Street	Houses
Westcrest Dr	12
Beechridge Rd	11
Northcrest Dr	21
Robinwood Dr	31
Crestmont Dr	13
Cresthaven Ln	12
Crestwood Dr	23
Southcrest Dr	7

NOTES:

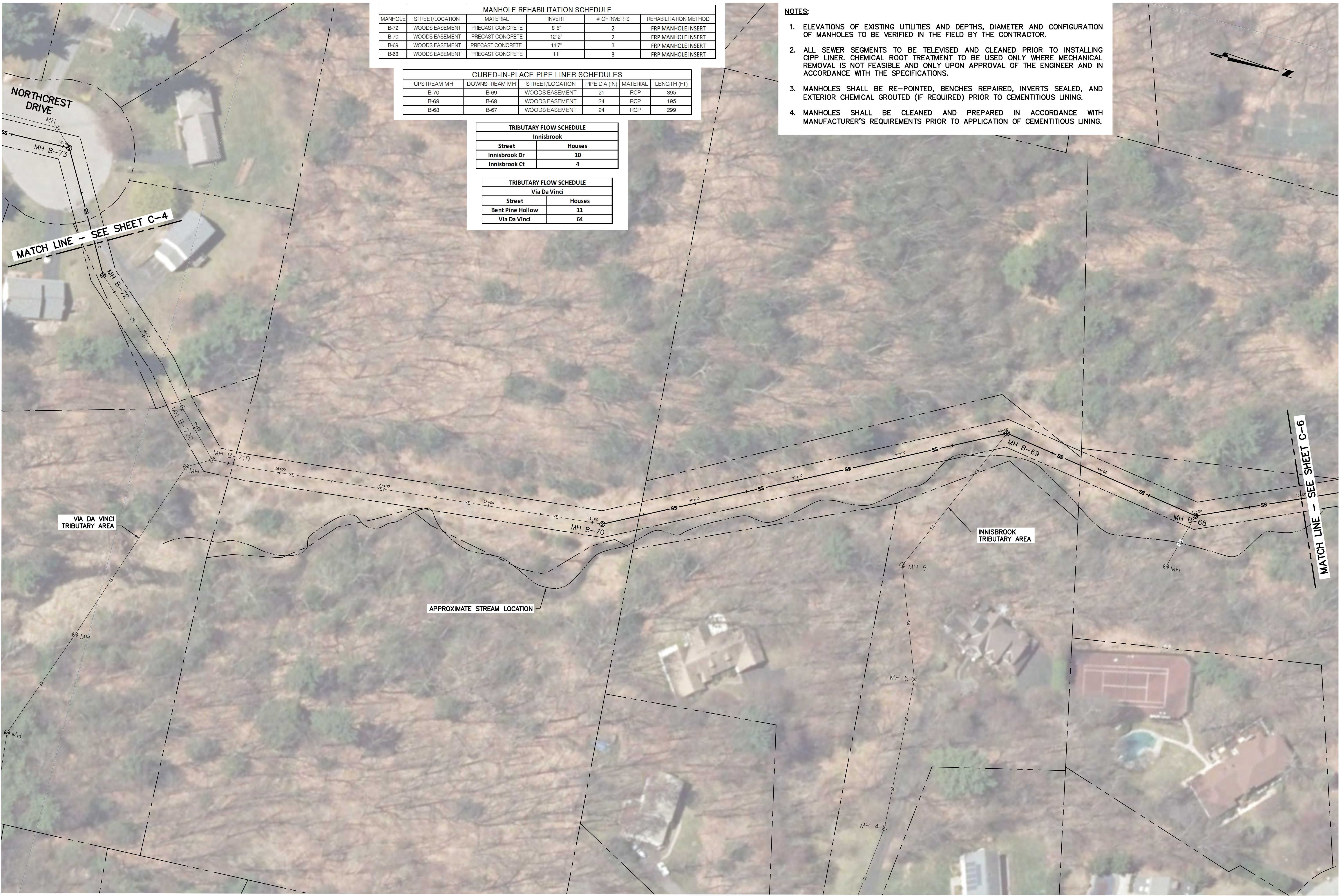
- ELEVATIONS OF EXISTING UTILITIES AND DEPTHS, DIAMETER AND CONFIGURATION OF MANHOLES TO BE VERIFIED IN THE FIELD BY THE CONTRACTOR.
- ALL SEWER SEGMENTS TO BE TELEVIEWED AND CLEANED PRIOR TO INSTALLING CIPP LINER. CHEMICAL ROOT TREATMENT TO BE USED ONLY WHERE MECHANICAL REMOVAL IS NOT FEASIBLE AND ONLY UPON APPROVAL OF THE ENGINEER AND IN ACCORDANCE WITH THE SPECIFICATIONS.
- MANHOLES SHALL BE RE-POINTED, BENCHES REPAIRED, INVERTS SEALED, AND EXTERIOR CHEMICAL GROUTED (IF REQUIRED) PRIOR TO CEMENTITIOUS LINING.
- MANHOLES SHALL BE CLEANED AND PREPARED IN ACCORDANCE WITH MANUFACTURER'S REQUIREMENTS PRIOR TO APPLICATION OF CEMENTITIOUS LINING.

COPYRIGHT © 2018 BY WESTON & SAMPSON, P.E., L.S., L.A., P.C. THIS DRAWING IS AN INSTRUMENT OF SERVICE AND IS THE PROPERTY OF WESTON & SAMPSON, P.E., L.S., L.A., P.C. THIS DRAWING MAY NOT BE REPRODUCED IN WHOLE OR IN PART BY ANY MEANS WHATSOEVER WITHOUT THE EXPRESS WRITTEN CONSENT OF WESTON & SAMPSON, P.E., L.S., L.A., P.C. UNAUTHORIZED ALTERATION OR ADDITION TO THIS DOCUMENT IS A VIOLATION OF SECTION 2005, SUBDIVISION 2 OF THE NEW YORK STATE EDUCATION LAW.

No.	Date	Dr. By	Chk. By	App. By	Description
		A	P	R	O
					V
					E
					D

REGISTERED PROFESSIONAL ENGINEER _____ DATE _____

SARATOGA COUNTY SEWER DISTRICT #1
CLIFTON PARK TRUNK SEWER REHABILITATION
NORTHCREST DRIVE - STATION 21+00 TO STATION 33+00
SCALE: 1" = 40' 19-SDCP-TR-1 N2180029
C-4



MANHOLE REHABILITATION SCHEDULE					
MANHOLE	STREET/LOCATION	MATERIAL	INVERT	# OF INVERTS	REHABILITATION METHOD
B-72	WOODS EASEMENT	PRECAST CONCRETE	8' 5"	2	FRP MANHOLE INSERT
B-70	WOODS EASEMENT	PRECAST CONCRETE	12' 2"	2	FRP MANHOLE INSERT
B-69	WOODS EASEMENT	PRECAST CONCRETE	11' 7"	3	FRP MANHOLE INSERT
B-68	WOODS EASEMENT	PRECAST CONCRETE	11'	3	FRP MANHOLE INSERT

CURED-IN-PLACE PIPE LINER SCHEDULES					
UPSTREAM MH	DOWNSTREAM MH	STREET/LOCATION	PIPE DIA (IN)	MATERIAL	LENGTH (FT)
B-70	B-69	WOODS EASEMENT	21	RCP	395
B-69	B-68	WOODS EASEMENT	24	RCP	195
B-68	B-67	WOODS EASEMENT	24	RCP	299

TRIBUTARY FLOW SCHEDULE	
Innisbrook	
Street	Houses
Innisbrook Dr	10
Innisbrook Ct	4

TRIBUTARY FLOW SCHEDULE	
Via Da Vinci	
Street	Houses
Bent Pine Hollow	11
Via Da Vinci	64

- NOTES:**
- ELEVATIONS OF EXISTING UTILITIES AND DEPTHS, DIAMETER AND CONFIGURATION OF MANHOLES TO BE VERIFIED IN THE FIELD BY THE CONTRACTOR.
 - ALL SEWER SEGMENTS TO BE TELEVISED AND CLEANED PRIOR TO INSTALLING CIPP LINER. CHEMICAL ROOT TREATMENT TO BE USED ONLY WHERE MECHANICAL REMOVAL IS NOT FEASIBLE AND ONLY UPON APPROVAL OF THE ENGINEER AND IN ACCORDANCE WITH THE SPECIFICATIONS.
 - MANHOLES SHALL BE RE-POINTED, BENCHES REPAIRED, INVERTS SEALED, AND EXTERIOR CHEMICAL GROUTED (IF REQUIRED) PRIOR TO CEMENTITIOUS LINING.
 - MANHOLES SHALL BE CLEANED AND PREPARED IN ACCORDANCE WITH MANUFACTURER'S REQUIREMENTS PRIOR TO APPLICATION OF CEMENTITIOUS LINING.

1 NORTHCREST DRIVE - STATION 33+00 TO STATION 46+00
SCALE: 1" = 40'

0 40 80
COPYRIGHT © 2018 BY WESTON & SAMPSON, PE, LS, LA, PC. THIS DRAWING IS AN INSTRUMENT OF SERVICE AND IS THE PROPERTY OF WESTON & SAMPSON, PE, LS, LA, PC. THIS DRAWING MAY NOT BE REPRODUCED IN WHOLE OR IN PART BY ANY MEANS WHATSOEVER WITHOUT THE EXPRESS WRITTEN CONSENT OF WESTON & SAMPSON, PE, LS, LA, PC. UNAUTHORIZED ALTERATION OR ADDITION TO THIS DOCUMENT IS A VIOLATION OF SECTION 2005, SUBDIVISION 2 OF THE NEW YORK STATE EDUCATION LAW.

Weston & Sampson
 Weston & Sampson, PE, LS, LA, PC
 1 Wilmers Circle, Suite 130, Albany, NY 12205
 518.463.4400 800.SAMPSON
 www.westonandsampson.com

No.	Date	Dr. By	Ch. By	App. By	Description
		A	P	P	O
					V
					E
					D

REGISTERED PROFESSIONAL ENGINEER _____ DATE _____

SARATOGA COUNTY SEWER DISTRICT #1
 CLIFTON PARK TRUNK SEWER REHABILITATION
NORTHCREST DRIVE - STATION 33+00 TO STATION 46+00
 SCALE: 1" = 40'
 CONTRACT: 19-SDCPT-1 | N2180029
 DR. BY: VLB | DSN. BY: JAS | CHK. BY: JMZ | APP. BY: JFB
 CADD NO. C-5 | JOB NO. N2180029

C-5
 SHEET 7 OF 19



MATCH LINE - SEE SHEET C-5

MATCH LINE - SEE SHEET C-7

1 STATION 46+00 TO STATION 57+50 CROSSING BEAR BROOK COURT
SCALE: 1" = 40'

NOTES:

- ELEVATIONS OF EXISTING UTILITIES AND DEPTHS, DIAMETER AND CONFIGURATION OF MANHOLES TO BE VERIFIED IN THE FIELD BY THE CONTRACTOR.
- ALL SEWER SEGMENTS TO BE TELEVIEWED AND CLEANED PRIOR TO INSTALLING CIPP LINER. CHEMICAL ROOT TREATMENT TO BE USED ONLY WHERE MECHANICAL REMOVAL IS NOT FEASIBLE AND ONLY UPON APPROVAL OF THE ENGINEER AND IN ACCORDANCE WITH THE SPECIFICATIONS.
- MANHOLES SHALL BE RE-POINTED, BENCHES REPAIRED, INVERTS SEALED, AND EXTERIOR CHEMICAL GROUTED (IF REQUIRED) PRIOR TO CEMENTITIOUS LINING.
- MANHOLES SHALL BE CLEANED AND PREPARED IN ACCORDANCE WITH MANUFACTURER'S REQUIREMENTS PRIOR TO APPLICATION OF CEMENTITIOUS LINING.

MANHOLE REHABILITATION SCHEDULE					
MANHOLE	STREET/LOCATION	MATERIAL	INVERT	# OF INVERTS	Rehabilitation Method
B-67	WOODS EASEMENT	PRECAST CONCRETE	13' 2"	3	FRP MANHOLE INSERT
B-66	WOODS EASEMENT	PRECAST CONCRETE	11' 4"	2	CEMENTITIOUS LINING
B-65	WOODS EASEMENT	PRECAST CONCRETE	11' 2"	2	CEMENTITIOUS LINING
B-64	WOODS EASEMENT	PRECAST CONCRETE	8' 3"	3	FRP MANHOLE INSERT

CURED-IN-PLACE PIPE LINER SCHEDULES					
UPSTREAM MH	DOWNSTREAM MH	STREET/LOCATION	PIPE DIA (IN)	MATERIAL	LENGTH (FT)
B-67	B-66	WOODS EASEMENT	24	RCP	273
B-66	B-65	WOODS EASEMENT	24	RCP	99
B-65	B-64	BEAR BROOKS CENTER	24	RCP	343
B-64	B-63	WOODS EASEMENT	24	RCP	507

TRIBUTARY FLOW SCHEDULE		
Cardinal		
Street	Houses	
Robinwood Dr	15	
Cardinal Ct	9	
Wintergreen Ct	12	

TRIBUTARY FLOW SCHEDULE		
Bear Brook		
Street	Houses	
Bear Brook Ct	18	
Sandalwood Dr	10	
Wildwood Ct	14	



No.	Date	Dr. By	Ch. By	App. By	Description			
		A	P	R	O	V	E	D

REGISTERED PROFESSIONAL ENGINEER _____ DATE _____

SARATOGA COUNTY SEWER DISTRICT #1
CLIFTON PARK TRUNK SEWER REHABILITATION
**STATION 46+00 TO STATION 57+50
CROSSING BEAR BROOK COURT**
SCALE: 1" = 40' 19-SDCP-TR-1 N2180029
C-6
JOB NO. N2180029
CONTRACTOR: JAS
DR BY: VLB
DIS BY: JAS
CHK BY: JMZ
APP BY: JFB

COPYRIGHT © 2018 BY WESTON & SAMPSON, PE, LS, LA, PC. THIS DRAWING IS AN INSTRUMENT OF SERVICE AND IS THE PROPERTY OF WESTON & SAMPSON, PE, LS, LA, PC. THIS DRAWING MAY NOT BE REPRODUCED IN WHOLE OR IN PART BY ANY MEANS WHATSOEVER WITHOUT THE EXPRESS WRITTEN CONSENT OF WESTON & SAMPSON, PE, LS, LA, PC. UNAUTHORIZED ALTERATION OR ADDITION TO THIS DOCUMENT IS A VIOLATION OF SECTION 2005, SUBDIVISION 2 OF THE NEW YORK STATE EDUCATION LAW.